

À des fins de recherche uniquement

Anticorps Monoclonal anti-HK3

Numéro de catalogue: 67803-1-Ig



Informations de base

Numéro de catalogue: 67803-1-Ig	Numéro d'acquisition GenBank: BC028129	Méthode de purification: Purification par protéine A
Taille: 150ul , Concentration: 1000 µg/ml by Nanodrop;	Identification du gène (NCBI): 3101	CloneNo.: 3H3C7
Hôte: Mouse	Nom complet: hexokinase 3 (white cell)	Dilutions recommandées: WB 1:5000-1:50000 IHC 1:500-1:2000
Isotype: IgG1	MW calculé: 923 aa, 99 kDa	
Immunogen Catalog Number: AG30798	MW observés: 99 kDa	

Applications

Applications testées:
IHC, WB, ELISA

Spécificité de l'espèce:
Humain, porc, rat, souris

Remarque-IHC: il est suggéré de démasquer l'antigène avec un tampon de TE buffer pH 9,0; (*) À défaut, 'le démasquage de l'antigène peut être 'effectué avec un tampon citrate pH 6,0.

Contrôles positifs:

WB : cellules Raji, cellules Ramos, cellules RAW 264.7, salive humain, salive humaine, tissu splénique de rat

IHC : tissu de cancer du poumon humain,

Informations générales

Stockage

Stockage:
Stocker à -20 °C.
Tampon de stockage:
PBS avec azoture de sodium à 0,02 % et glycérol à 50 % pH 7,3
L'aliquotage n'est pas nécessaire pour le stockage à -20C

*** Les 20ul contiennent 0,1% de BSA.

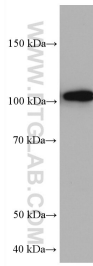
For technical support and original validation data for this product please contact:

T: 1 (888) 4PTGLAB (1-888-478-4522) (toll free
in USA), or 1(312) 455-8498 (outside USA)

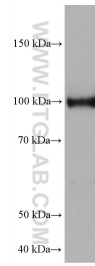
E: proteintech@ptglab.com
W: ptglab.com

This product is exclusively available under Proteintech Group brand and is not available to purchase from any other manufacturer.

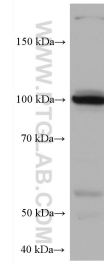
Données de validation sélectionnées



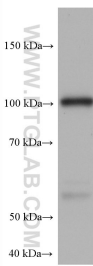
human saliva were subjected to SDS PAGE followed by western blot with 67803-1-Ig (HK3 antibody) at dilution of 1:10000 incubated at room temperature for 1.5 hours.



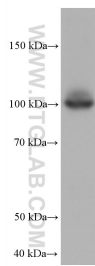
rat spleen tissue were subjected to SDS PAGE followed by western blot with 67803-1-Ig (HK3 antibody) at dilution of 1:10000 incubated at room temperature for 1.5 hours.



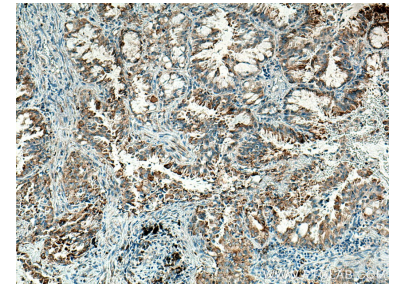
Raji cells were subjected to SDS PAGE followed by western blot with 67803-1-Ig (HK3 antibody) at dilution of 1:10000 incubated at room temperature for 1.5 hours.



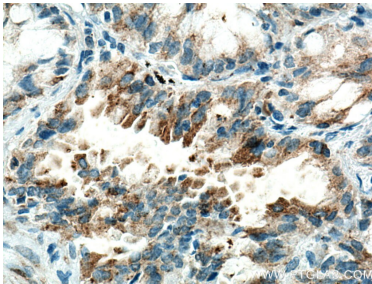
Ramos cells were subjected to SDS PAGE followed by western blot with 67803-1-Ig (HK3 antibody) at dilution of 1:10000 incubated at room temperature for 1.5 hours.



RAW 264.7 cells were subjected to SDS PAGE followed by western blot with 67803-1-Ig (HK3 antibody) at dilution of 1:10000 incubated at room temperature for 1.5 hours.



Immunohistochemical analysis of paraffin-embedded human lung cancer tissue slide using 67803-1-Ig (HK3 antibody) at dilution of 1:1000 (under 10x lens). Heat mediated antigen retrieval with Tris-EDTA buffer (pH 9.0).



Immunohistochemical analysis of paraffin-embedded human lung cancer tissue slide using 67803-1-Ig (HK3 antibody) at dilution of 1:1000 (under 40x lens). Heat mediated antigen retrieval with Tris-EDTA buffer (pH 9.0).