

À des fins de recherche uniquement

# Anticorps Monoclonal anti-WWP1

Numéro de catalogue: 67804-1-Ig



## Informations de base

Numéro de catalogue:	67804-1-Ig	Numéro d'acquisition GenBank:	BC036065	Méthode de purification:	Purification par protéine A
Taille:	150ul, Concentration: 1000 µg/ml by Nanodrop;	Identification du gène (NCBI):	11059	CloneNo.:	2G8G11
Hôte:	Mouse	Nom complet:	WW domain containing E3 ubiquitin protein ligase 1	Dilutions recommandées:	WB 1:5000-1:50000
Isotype:	IgG2b	MW calculé	922 aa, 105 kDa		
Immunogen Catalog Number:	AG30171	MW observés:	95-105 kDa		

## Applications

Applications testées:  
WB, ELISA  
Spécificité de l'espèce:  
Humain

Contrôles positifs:  
WB : cellules MCF-7, cellules HaCaT, cellules HeLa, cellules Jurkat, cellules LNCaP

## Informations générales

WW domain-containing E3 ubiquitin protein ligase 1 (WWP1) is a multifunction protein containing an N-terminal C2 domain, four tandem WW domains for substrate binding, and a C-terminal catalytic HECT domain for ubiquitin transferring. It is also named as AIP5, Tiul1. WWP1 regulates a variety of cellular biological processes including protein trafficking and degradation, signaling, transcription, and viral budding. WWP1 has been implicated in several diseases, such as cancers, infectious diseases, neurological diseases, and aging (PMID:22051607). It has 6 isoforms produced by alternative splicing.

## Stockage

Stockage:  
Stocker à -20°C. Stable pendant un an après l'expédition.  
Tampon de stockage:  
PBS avec azoture de sodium à 0,02 % et glycérol à 50 % pH 7,3  
L'aliquotage n'est pas nécessaire pour le stockage à -20C

\*\*\* Les 20ul contiennent 0,1% de BSA.

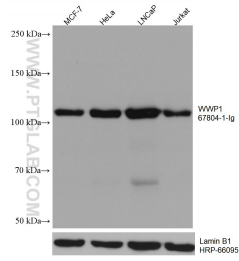
For technical support and original validation data for this product please contact:

T: 1 (888) 4PTGLAB (1-888-478-4522) (toll free in USA), or 1(312) 455-8498 (outside USA)

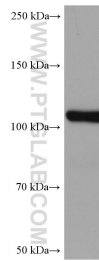
E: [proteintech@ptglab.com](mailto:proteintech@ptglab.com)  
W: [ptglab.com](http://ptglab.com)

This product is exclusively available under Proteintech Group brand and is not available to purchase from any other manufacturer.

## Données de validation sélectionnées



Various lysates were subjected to SDS PAGE followed by western blot with 67804-1-Ig (WWP1 antibody) at dilution of 1:10000 incubated at room temperature for 1.5 hours. The membrane was stripped and reblotted with HRP-conjugated Lamin B1 Monoclonal antibody (HRP-66095) as loading control.



HaCaT cells were subjected to SDS PAGE followed by western blot with 67804-1-Ig (WWP1 antibody) at dilution of 1:10000 incubated at room temperature for 1.5 hours.