

À des fins de recherche uniquement

Anticorps Monoclonal anti-TALDO1

Numéro de catalogue: 67816-1-Ig

Phare

1 Publications



Informations de base

Numéro de catalogue: 67816-1-Ig	Numéro d'acquisition GenBank: BC009680	Méthode de purification: Purification par protéine G
Taille: 150ul, Concentration: 1000 µg/ml by Nanodrop and 472 µg/ml by Bradford method using BSA as the standard;	Identification du gène (NCBI): 6888	CloneNo.: 2F5G3
Hôte: Mouse	Nom complet: transaldolase 1	Dilutions recommandées: WB 1:5000-1:50000 IHC 1:500-1:2000
Isotype: IgG1	MW calculé: 337 aa, 38 kDa	
Immunogen Catalog Number: AG3031	MW observés: 38 kDa	

Applications

Applications testées:

IHC, WB, ELISA

Demandes citées:

WB

Spécificité de l'espèce:

Humain

Espèces citées:

Humain

Remarque-IHC: il est suggéré de démasquer l'antigène avec un tampon de TE buffer pH 9,0; (*) A défaut, le démasquage de l'antigène peut être effectué avec un tampon citrate pH 6,0.

Contrôles positifs:

WB : cellules LNCaP, cellules HEK-293, cellules HeLa, cellules Jurkat, cellules K-562

IHC : tissu de cancer de l'oesophage humain, tissu de cancer de la prostate humain

Informations générales

TALDO1 belongs to the transaldolase family which contributes to the generation of NADPH in the nonoxidative phase of the pentose phosphate pathway (PPP). Defects in TALDO1 are the cause of transaldolase 1 deficiency which results in telangiectases of the skin, hepatosplenomegaly, and enlarged clitoris.

Publications notables

Autrice	Pubmed ID	Journal	Application
Semira R. Ortiz	36276829	Front Nutr	WB

Stockage

Stockage:

Stocker à -20°C. Stable pendant un an après l'expédition.

Tampon de stockage:

PBS avec azoture de sodium à 0,02 % et glycérol à 50 % pH 7,3

L'aliquotage n'est pas nécessaire pour le stockage à -20C

*** Les 20ul contiennent 0,1% de BSA.

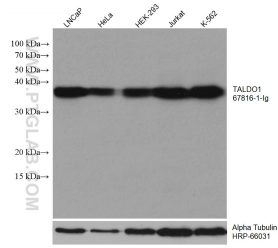
For technical support and original validation data for this product please contact:

T: 1 (888) 4PTGLAB (1-888-478-4522) (toll free in USA), or 1(312) 455-8498 (outside USA)

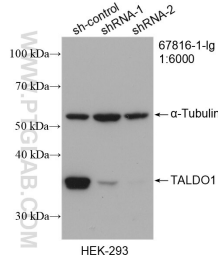
E: proteintech@ptglab.com
W: ptglab.com

This product is exclusively available under Proteintech Group brand and is not available to purchase from any other manufacturer.

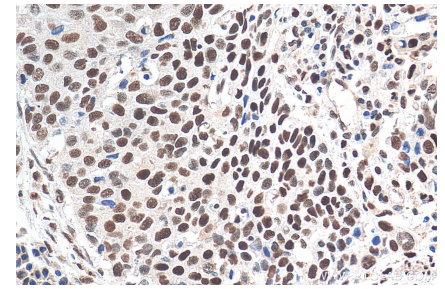
Données de validation sélectionnées



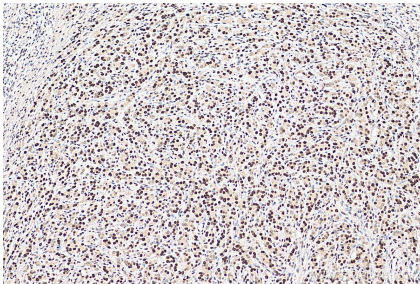
Various lysates were subjected to SDS PAGE followed by western blot with 67816-1-Ig (TALDO1 antibody) at dilution of 1:10000 incubated at room temperature for 1.5 hours. The membrane was stripped and reblotted with HRP-conjugated Alpha Tubulin Monoclonal antibody (HRP-66031) as loading control.



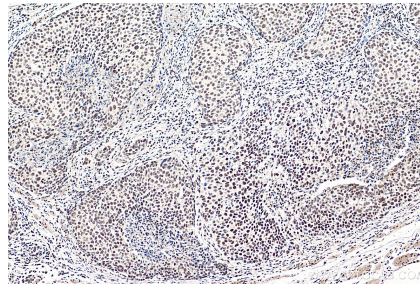
WB result of TALDO1 antibody (67816-1-Ig; 1:6000; incubated at room temperature for 1.5 hours) with sh-Control and sh-TALDO1 transfected HEK-293 cells.



Immunohistochemical analysis of paraffin-embedded human oesophagus cancer tissue slide using 67816-1-Ig (TALDO1 antibody) at dilution of 1:1000 (under 40x lens). Heat mediated antigen retrieval with Tris-EDTA buffer (pH 9.0).



Immunohistochemical analysis of paraffin-embedded human prostate cancer tissue slide using 67816-1-Ig (TALDO1 antibody) at dilution of 1:1000 (under 10x lens). Heat mediated antigen retrieval with Tris-EDTA buffer (pH 9.0).



Immunohistochemical analysis of paraffin-embedded human oesophagus cancer tissue slide using 67816-1-Ig (TALDO1 antibody) at dilution of 1:1000 (under 10x lens). Heat mediated antigen retrieval with Tris-EDTA buffer (pH 9.0).