

À des fins de recherche uniquement

Anticorps Monoclonal anti-TOE1

Numéro de catalogue: 67829-1-Ig



Informations de base

Numéro de catalogue: 67829-1-Ig	Numéro d'acquisition GenBank: BC009364	Méthode de purification: Purification par protéine A
Taille: 150ul, Concentration: 1000 µg/ml by Nanodrop;	Identification du gène (NCBI): 114034	CloneNo.: 2C10H7
Hôte: Mouse	Nom complet: target of EGR1, member 1 (nuclear)	Dilutions recommandées: WB 1:2000-1:10000 IHC 1:250-1:1000 IF 1:400-1:1600
Isotype: IgG2a	MW calculé: 510 aa, 57 kDa	
Immunogen Catalog Number: AG28982	MW observés: 57 kDa	

Applications

Applications testées:

IF, IHC, WB, ELISA

Spécificité de l'espèce:

Humain

Remarque-IHC: il est suggéré de démasquer l'antigène avec un tampon de TE buffer pH 9,0; (*) À défaut, 'le démasquage de l'antigène peut être effectué avec un tampon citrate pH 6,0.

Contrôles positifs:

WB : cellules A549, cellules HEK-293, cellules HeLa, cellules HepG2, cellules Jurkat, cellules K-562

IHC : tissu de cancer du côlon humain,

IF : cellules HepG2,

Informations générales

TOE1, also known as hCaf1z, belongs to the DEDD family of deadenylases. TOE1 was initially identified as a direct target gene of ERG1, an immediate early transcription factor. TOE1 encodes an Asp-Glu-Asp-Asp deadenylase that specifically localizes to Cajal bodies in the nucleus, where assembly and maturation of small nuclear ribonucleoprotein particles, and telomerase ribonucleoprotein complex take place (PMID: 36257135). TOE1 has 2 isoforms with the molecular mass of 48 and 57 kDa.

Stockage

Stockage:

Stocker à -20°C. Stable pendant un an après l'expédition.

Tampon de stockage:

PBS avec azoture de sodium à 0,02 % et glycérol à 50 % pH 7,3

L'aliquotage n'est pas nécessaire pour le stockage à -20C

*** Les 20ul contiennent 0,1% de BSA.

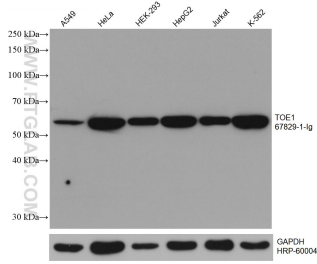
For technical support and original validation data for this product please contact:

T: 1 (888) 4PTGLAB (1-888-478-4522) (toll free in USA), or 1(312) 455-8498 (outside USA)

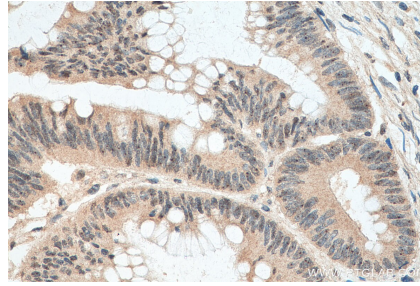
E: proteintech@ptglab.com
W: ptglab.com

This product is exclusively available under Proteintech Group brand and is not available to purchase from any other manufacturer.

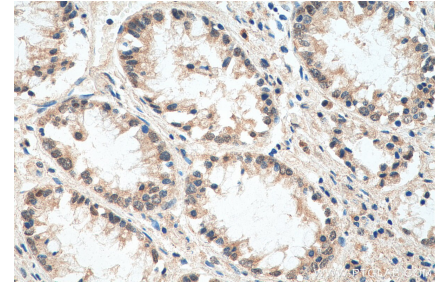
Données de validation sélectionnées



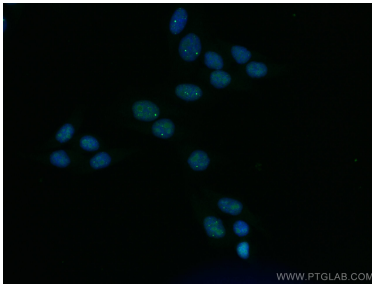
Various lysates were subjected to SDS PAGE followed by western blot with 67829-1-Ig (TOE1 antibody) at dilution of 1:5000 incubated at room temperature for 1.5 hours. The membrane was stripped and reblotted with HRP-conjugated GAPDH Monoclonal antibody (HRP-60004) as loading control.



Immunohistochemical analysis of paraffin-embedded human colon cancer tissue slide using 67829-1-Ig (TOE1 antibody) at dilution of 1:500 (under 40x lens). Heat mediated antigen retrieval with Tris-EDTA buffer (pH 9.0).



Immunohistochemical analysis of paraffin-embedded human colon cancer tissue slide using 67829-1-Ig (TOE1 antibody) at dilution of 1:500 (under 40x lens). Heat mediated antigen retrieval with Tris-EDTA buffer (pH 9.0).



Immunofluorescent analysis of (4% PFA) fixed HepG2 cells using TOE1 antibody (67829-1-Ig, Clone: 2C10H7) at dilution of 1:800 and CoraLite®488-Conjugated AffiniPure Goat Anti-Mouse IgG(H+L).