

À des fins de recherche uniquement

Anticorps Monoclonal anti-PDE6A

Numéro de catalogue: 67832-1-Ig



Informations de base

Numéro de catalogue: 67832-1-Ig	Numéro d'acquisition GenBank: BC035909	Méthode de purification: Purification par protéine G
Taille: 150ul, Concentration: 1000 µg/ml by Nanodrop;	Identification du gène (NCBI): 5145	CloneNo.: 1B3B4
Hôte: Mouse	Nom complet: phosphodiesterase 6A, cGMP-specific, rod, alpha	Dilutions recommandées:
Isotype: IgG1	MW calculé 860 aa, 100 kDa	
Immunogen Catalog Number: AG16741	MW observés: 100 kDa	

Applications

Applications testées:
WB, ELISA
Spécificité de l'espèce:
Humain, rat, souris

Contrôles positifs:

WB : tissu oculaire de souris, tissu oculaire de rat, tissu rétinien de souris

Informations générales

PDE6A (Rod cGMP-specific 3',5'-cyclic phosphodiesterase subunit alpha) is also named as GMP-PDE alpha, PDE V-B1, PDEA and belongs to the cyclic nucleotide phosphodiesterase family. PDE6A contains an open reading frame capable of coding for a polypeptide of 859 amino acids and about 100 kDa. It is a subunit of a key phototransduction enzyme which participates in processes of transmission and amplification of the visual signal. The expression of PDE6 alpha in retina is essential for normal expression of PDE6 beta and PDE6 gamma.

Stockage

Stockage:
Stocker à -20 °C
Tampon de stockage:
PBS avec azoture de sodium à 0,02 % et glycérol à 50 % pH 7,3
L'aliquotage n'est pas nécessaire pour le stockage à -20C

***** Les 20ul contiennent 0,1% de BSA.**

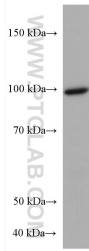
For technical support and original validation data for this product please contact:

T: 1 (888) 4PTGLAB (1-888-478-4522) (toll free
in USA), or 1(312) 455-8498 (outside USA)

E: proteintech@ptglab.com
W: ptglab.com

This product is exclusively available under Proteintech Group brand and is not available to purchase from any other manufacturer.

Données de validation sélectionnées



mouse eye tissue were subjected to SDS PAGE followed by western blot with 67832-1-Ig (PDE6A antibody) at dilution of 1:2000 incubated at room temperature for 1.5 hours.