

À des fins de recherche uniquement

Anticorps Monoclonal anti-CIP2A

Numéro de catalogue: 67843-1-Ig



Informations de base

Numéro de catalogue: 67843-1-Ig	Numéro d'acquisition GenBank: BC130564	Méthode de purification: Purification par protéine G
Taille: 150ul, Concentration: 1000 µg/ml by Nanodrop;	Identification du gène (NCBI): 57650	CloneNo.: 2A3F3
Hôte: Mouse	Nom complet: KIAA1524	Dilutions recommandées: WB 1:5000-1:50000 IF 1:200-1:800
Isotype: IgG1	MW calculé: 905 aa, 102 kDa	
Immunogen Catalog Number: AG19598	MW observés: 102 kDa	

Applications

Applications testées:
IF, WB, ELISA
Spécificité de l'espèce:
Humain, rat

Contrôles positifs:

WB : cellules LNCaP, cellules HEK-293, cellules HeLa,
cellules HSC-T6, cellules Jurkat, cellules K-562,
cellules PC-12
IF : cellules HeLa,

Informations générales

Cancerous inhibitor of protein phosphatase 2A (CIP2A) was originally identified as a cellular protein phosphatase 2A (PP2A) inhibitor, and has been shown to control oncogenic cellular signals by suppressing the tumor suppressor PP2A. CIP2A overexpression has been found in several human malignancies including breast cancer, hepatocellular carcinoma, gastric cancer, head and neck cancer, colon cancer, prostate cancer and non-small cell lung cancer. CIP2A is a 83-102 kDa cytoplasmic protein. (PMID: 26824320, PMID: 25458953, PMID: 29720672)

Stockage

Stockage:
Stocker à -20 °C.
Tampon de stockage:
PBS avec azote de sodium à 0,02 % et glycérol à 50 % pH 7,3
L'aliquotage n'est pas nécessaire pour le stockage à -20C

*** Les 20ul contiennent 0,1% de BSA.

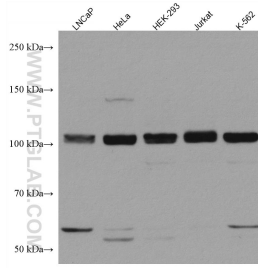
For technical support and original validation data for this product please contact:

T: 1 (888) 4PTGLAB (1-888-478-4522) (toll free
in USA), or 1(312) 455-8498 (outside USA)

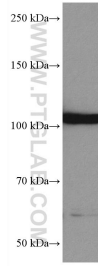
E: proteintech@ptglab.com
W: ptglab.com

This product is exclusively available under Proteintech Group brand and is not available to purchase from any other manufacturer.

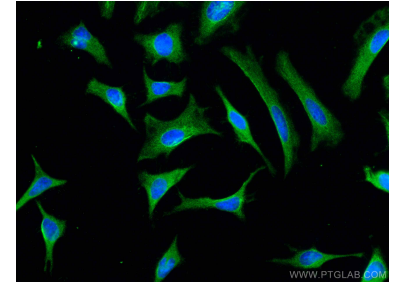
Données de validation sélectionnées



Various lysates were subjected to SDS PAGE followed by western blot with 67843-1-Ig (KIAA1524 antibody) at dilution of 1:10000 incubated at room temperature for 1.5 hours.



HSC-T6 cells were subjected to SDS PAGE followed by western blot with 67843-1-Ig (KIAA1524 antibody) at dilution of 1:10000 incubated at room temperature for 1.5 hours.



Immunofluorescent analysis of (-20°C Methanol) fixed HeLa cells using KIAA1524 antibody (67843-1-Ig, Clone: 2A3F3) at dilution of 1:400 and CoraLite®488-Conjugated AffiniPure Goat Anti-Mouse IgG(H+L).