

À des fins de recherche uniquement

# Anticorps Monoclonal anti-PSMB1

Numéro de catalogue: 67847-1-Ig



## Informations de base

Numéro de catalogue: 67847-1-Ig	Numéro d'acquisition GenBank: BC020807	Méthode de purification: Purification par protéine G
Taille: 150ul, Concentration: 1000 µg/ml by Nanodrop;	Identification du gène (NCBI): 5689	CloneNo.: 1C7C5
Hôte: Mouse	Nom complet: proteasome (prosome, macropain) subunit, beta type, 1	Dilutions recommandées: WB 1:5000-1:50000 IHC 1:250-1:1000 IF 1:400-1:1600
Isotype: IgG1	MW calculé 241 aa, 26 kDa	
Immunogen Catalog Number: AG30791	MW observés: 25 kDa	

## Applications

### Applications testées:

IF, IHC, WB, ELISA

### Spécificité de l'espèce:

Humain

**Remarque-IHC: il est suggéré de démasquer l'antigène avec un tampon de TE buffer pH 9,0; (\*) À défaut, 'le démasquage de l'antigène peut être effectué avec un tampon citrate pH 6,0.**

### Contrôles positifs:

WB : cellules Jurkat, cellules K-562, cellules THP-1, cellules U-937

IHC : tissu de cancer du foie humain,

IF : cellules U2OS,

## Informations générales

PSMB1 (Proteasome subunit beta type-1) is also named as PSC5 and belongs to the peptidase T1B family. The proteasome is a multicatalytic proteinase complex which is characterized by its ability to cleave peptides with Arg, Phe, Tyr, Leu, and Glu adjacent to the leaving group at neutral or slightly basic pH. The gene encodes a 241 amino acid protein with a 28 amino acid propeptide and two glycosylation sites.

## Stockage

### Stockage:

Stocker à -20°C. Stable pendant un an après l'expédition.

### Tampon de stockage:

PBS avec azoture de sodium à 0,02 % et glycérol à 50 % pH 7,3

L'aliquotage n'est pas nécessaire pour le stockage à -20C

\*\*\* Les 20ul contiennent 0,1% de BSA.

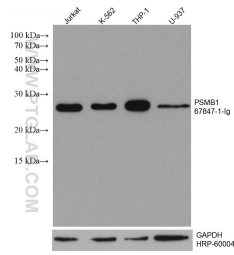
For technical support and original validation data for this product please contact:

T: 1 (888) 4PTGLAB (1-888-478-4522) (toll free in USA), or 1(312) 455-8498 (outside USA)

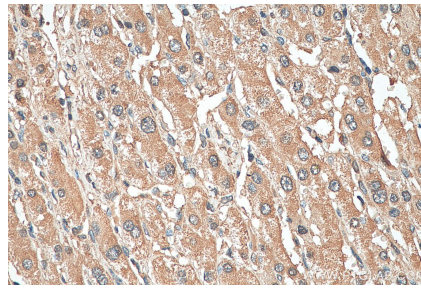
E: proteintech@ptglab.com  
W: ptglab.com

This product is exclusively available under Proteintech Group brand and is not available to purchase from any other manufacturer.

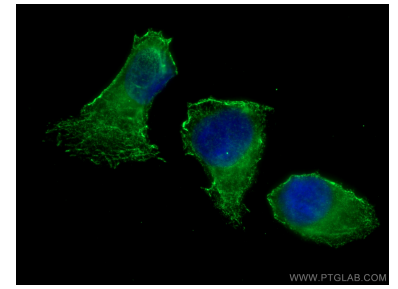
## Données de validation sélectionnées



Various lysates were subjected to SDS PAGE followed by western blot with 67847-1-Ig (PSMB1 antibody) at dilution of 1:10000 incubated at room temperature for 1.5 hours. The membrane was stripped and reblotted with HRP-conjugated GAPDH Monoclonal antibody (HRP-60004) as loading control.



Immunohistochemical analysis of paraffin-embedded human liver cancer tissue slide using 67847-1-Ig (PSMB1 antibody) at dilution of 1:500 (under 40x lens). Heat mediated antigen retrieval with Tris-EDTA buffer (pH 9.0).



Immunofluorescent analysis of (-20°C Methanol) fixed U2OS cells using PSMB1 antibody (67847-1-Ig, Clone: 1C7C5) at dilution of 1:800 and CoraLite®488-Conjugated AffiniPure Goat Anti-Mouse IgG(H+L).