

À des fins de recherche uniquement

Anticorps Monoclonal anti-AFP

Numéro de catalogue: 67852-1-Ig



Informations de base

Numéro de catalogue: 67852-1-Ig	Numéro d'acquisition GenBank: BC027881	Méthode de purification: Purification par protéine A
Taille: 150ul , Concentration: 1000 µg/ml by Nanodrop;	Identification du gène (NCBI): 174	CloneNo.: 4B3E4
Hôte: Mouse	Nom complet: alpha-fetoprotéin	Dilutions recommandées: WB 1:5000-1:50000
Isotype: IgG1	MW calculé 69 kDa	
Immunogen Catalog Number: AG6089	MW observés: 68-72 kDa	

Applications

Applications testées: WB, ELISA	Contrôles positifs:
Spécificité de l'espèce: Humain	WB : cellules HepG2, cellules HuH-7, tissu placentaire humain, tissu testiculaire humain

Informations générales

AFP, also known as Alpha-fetoprotein, is a major plasma protein in the fetus and its concentration is very low in the adult (PubMed:24120489). AFP is considered a marker of hepatocyte precursors. AFP can be detected at abnormally high concentrations in hepatocellular carcinomas as well as in the plasma and ascitic fluid of adults with hepatoma. High AFP concentrations have been correlated with tumor cell growth, indicating that AFP can serve as a tumor marker (PubMed: 18669658).

Stockage

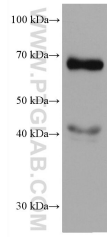
Stockage:
Stocker à -20°C. Stable pendant un an après l'expédition.
Tampon de stockage:
PBS avec azoture de sodium à 0,02 % et glycérol à 50 % pH 7,3
L'aliquotage n'est pas nécessaire pour le stockage à -20C

***** Les 20ul contiennent 0,1% de BSA.**

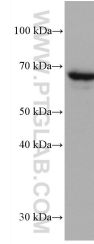
For technical support and original validation data for this product please contact:
T: 1 (888) 4PTGLAB (1-888-478-4522) (toll free in USA), or 1(312) 455-8498 (outside USA) E: proteintech@ptglab.com W: ptglab.com

This product is exclusively available under Proteintech Group brand and is not available to purchase from any other manufacturer.

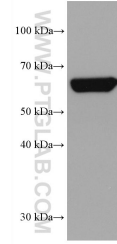
Données de validation sélectionnées



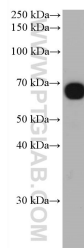
HuH-7 cells were subjected to SDS PAGE followed by western blot with 67852-1-Ig (AFP antibody) at dilution of 1:10000 incubated at room temperature for 1.5 hours.



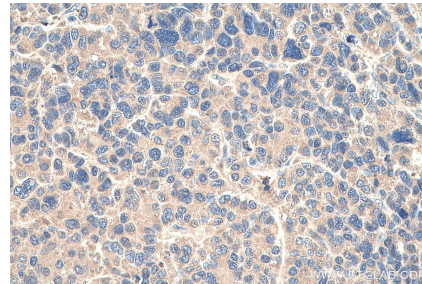
HepG2 cells were subjected to SDS PAGE followed by western blot with 67852-1-Ig (AFP antibody) at dilution of 1:10000 incubated at room temperature for 1.5 hours.



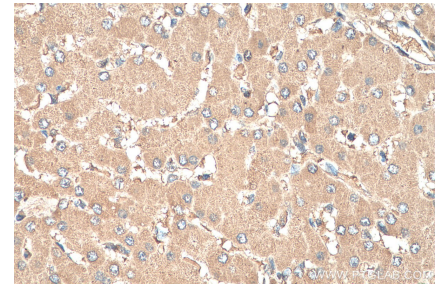
human testis tissue were subjected to SDS PAGE followed by western blot with 67852-1-Ig (AFP antibody) at dilution of 1:10000 incubated at room temperature for 1.5 hours.



human placenta tissue were subjected to SDS PAGE followed by western blot with 67852-1-Ig (AFP antibody) at dilution of 1:10000 incubated at room temperature for 1.5 hours.



Immunohistochemical analysis of paraffin-embedded human liver cancer tissue slide using 67852-1-Ig (AFP antibody) at dilution of 1:1000 (under 40x lens). Heat mediated antigen retrieval with Tris-EDTA buffer (pH 9.0).



Immunohistochemical analysis of paraffin-embedded human liver tissue slide using 67852-1-Ig (AFP antibody) at dilution of 1:1000 (under 40x lens). Heat mediated antigen retrieval with Tris-EDTA buffer (pH 9.0).