

À des fins de recherche uniquement

# Anticorps Monoclonal anti-RCHY1

Numéro de catalogue: 67856-1-Ig

Phare

1 Publications



## Informations de base

|  |  |   |
|--|--|---|
| Numéro de catalogue:<br>67856-1-Ig                           | Numéro d'acquisition GenBank:<br>BC047393                              | Méthode de purification:<br>Purification par protéine A                           |
| Taille:<br>150ul , Concentration: 1000 µg/ml by<br>Nanodrop; | Identification du gène (NCBI):<br>25898                                | CloneNo.:<br>2C11C11  |
| Hôte:<br>Mouse   | Nom complet:<br>ring finger and CHY zinc finger<br>domain containing 1 | Dilutions recommandées:<br>WB 1:1000-1:6000<br>IHC 1:150-1:600<br>IF 1:400-1:1600 |
| Isotype:<br>IgG2a  | MW calculé<br>261 aa, 30 kDa   |   |
| Immunogen Catalog Number:<br>AG4942                          |  |   |

## Applications

|   |   |
|---|---|
| Applications testées:<br>IF, IHC, WB, ELISA | Contrôles positifs:   |
| Demandes citées:<br>WB                      | WB : cellules HEK-293, cellules Daudi, cellules Jurkat,<br>cellules K-562, cellules LNCaP |
| Spécificité de l'espèce:<br>Humain          | IHC : tissu de cancer du sein humain,<br>IF : cellules HeLa, cellules A549                |
| Espèces citées:<br>Humain                   |   |

**Remarque-IHC: il est suggéré de démasquer l'antigène avec un tampon de TE buffer pH 9,0; (\*) À défaut, le démasquage de l'antigène peut être effectué avec un tampon citrate pH 6,0.**

## Informations générales

Pirh2 is also named as RCHY1, ARNIP, CHIMP, PIRH2, RNF199, ZNF363 and has p53-induced ubiquitin-protein ligase activity, promoting p53 degradation. Pirh2 monoubiquitinates the translesion DNA polymerase POLH and contributes to the regulation of the cell cycle progression. This protein has 8 isoforms produced by alternative splicing and can exist as a monomer or homodimer.

## Publications notables

| Autrice      | Pubmed ID | Journal  | Application |
|--------------|-----------|----------|-------------|
| Sharanya Nag | 36968077  | iScience | WB          |

## Stockage

Stockage:  
Stocker à -20°C. Stable pendant un an après l'expédition.  
Tampon de stockage:  
PBS avec azoture de sodium à 0,02 % et glycérol à 50 % pH 7,3  
L'aliquotage n'est pas nécessaire pour le stockage à -20C

\*\*\* Les 20ul contiennent 0,1% de BSA.

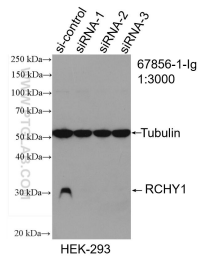
For technical support and original validation data for this product please contact:

T: 1 (888) 4PTGLAB (1-888-478-4522) (toll free  
in USA), or 1(312) 455-8498 (outside USA)

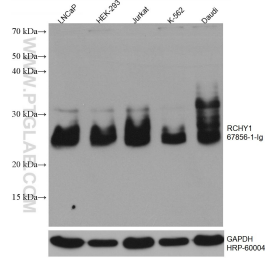
E: proteintech@ptglab.com  
W: ptglab.com

This product is exclusively available under Proteintech Group brand and is not available to purchase from any other manufacturer.

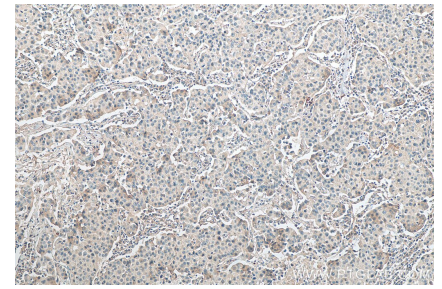
## Données de validation sélectionnées



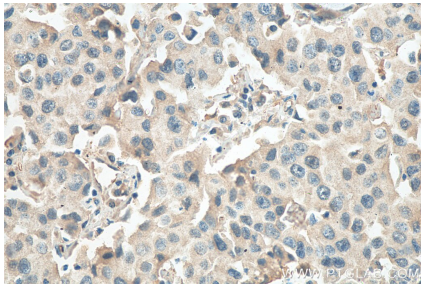
WB result of RCHY1 antibody (67856-1-Ig; 1:3000; incubated at room temperature for 1.5 hours) with sh-Control and sh-RCHY1 transfected HEK-293 cells.



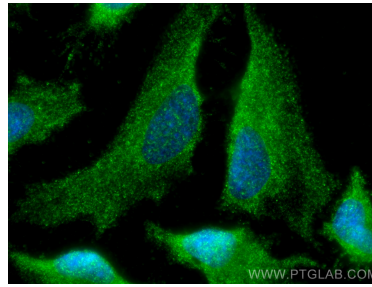
Various lysates were subjected to SDS PAGE followed by western blot with 67856-1-Ig (RCHY1 antibody) at dilution of 1:3000 incubated at room temperature for 1.5 hours. The membrane was stripped and reblotted with HRP-conjugated GAPDH Monoclonal antibody (HRP-60004) as loading control.



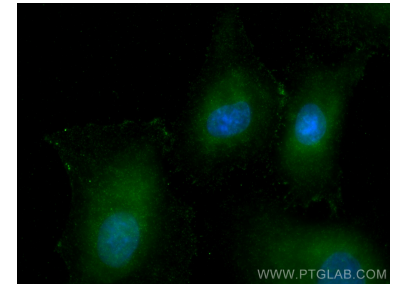
Immunohistochemical analysis of paraffin-embedded human breast cancer tissue slide using 67856-1-Ig (RCHY1 antibody) at dilution of 1:300 (under 10x lens). Heat mediated antigen retrieval with Tris-EDTA buffer (pH 9.0).



Immunohistochemical analysis of paraffin-embedded human breast cancer tissue slide using 67856-1-Ig (RCHY1 antibody) at dilution of 1:300 (under 40x lens). Heat mediated antigen retrieval with Tris-EDTA buffer (pH 9.0).



Immunofluorescent analysis of (-20°C Methanol) fixed HeLa cells using RCHY1 antibody (67856-1-Ig, Clone: 2C11C11) at dilution of 1:800 and CoraLite@488-Conjugated AffiniPure Goat Anti-Mouse IgG(H+L).



Immunofluorescent analysis of (-20°C Methanol) fixed A549 cells using RCHY1 antibody (67856-1-Ig, Clone: 2C11C11) at dilution of 1:800 and CoraLite@488-Conjugated AffiniPure Goat Anti-Mouse IgG(H+L).