

À des fins de recherche uniquement

# Anticorps Monoclonal anti-CBS

Numéro de catalogue: 67861-1-Ig **2 Publications**



## Informations de base

Numéro de catalogue: 67861-1-Ig	Numéro d'acquisition GenBank: BC000440	Méthode de purification: Purification par protéine A
Taille: 150ul, Concentration: 1000 µg/ml by Nanodrop;	Identification du gène (NCBI): 875	CloneNo.: 1E4F10
Hôte: Mouse	Nom complet: cystathionine-beta-synthase	Dilutions recommandées: WB 1:5000-1:50000 IHC 1:500-1:2000 IF 1:400-1:1600
Isotype: IgG2b	MW calculé 61 kDa	
Immunogen Catalog Number: AG7008	MW observés: 61-63 kDa	

## Applications

### Applications testées:

IF, IHC, WB, ELISA

### Demandes citées:

WB

### Spécificité de l'espèce:

Humain, rat

### Espèces citées:

rat

### Contrôles positifs:

WB : cellules LNCaP, cellules HEK-293, cellules HeLa, cellules Jurkat, cellules K-562, cellules THP-1

IHC : tissu de cancer du pancréas humain,

IF : cellules HeLa,

**Remarque-IHC: il est suggéré de démasquer l'antigène avec un tampon de TE buffer pH 9,0; (\*) À défaut, le démasquage de l'antigène peut être effectué avec un tampon citrate pH 6,0.**

## Informations générales

The CBS gene encodes cystathionine beta-synthase, which catalyzes the first irreversible step of transsulfuration. The CBS enzyme is a homotetramer of 63-kD subunits and requires pyridoxal phosphate and heme for activity (PMID:11230183). CBS protein is localized in most areas of the brain, but predominantly in the cell bodies and neuronal processes of Purkinje cells and Ammon's horn neurons (PMID:12588964).

## Publications notables

Autrice	Pubmed ID	Journal	Application
Jiexian Du	35483194	Biomed Pharmacother	WB
Magdalena Górný	37646112	FEBS J	WB

## Stockage

### Stockage:

Stocker à -20°C. Stable pendant un an après l'expédition.

### Tampon de stockage:

PBS avec azoture de sodium à 0,02 % et glycérol à 50 % pH 7,3

L'aliquotage n'est pas nécessaire pour le stockage à -20C

\*\*\* Les 20ul contiennent 0,1% de BSA.

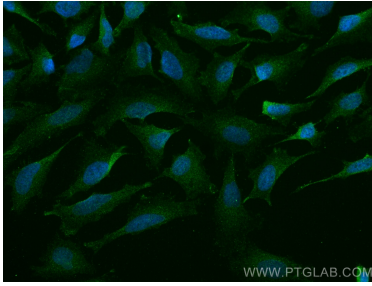
For technical support and original validation data for this product please contact:

T: 1 (888) 4PTGLAB (1-888-478-4522) (toll free in USA), or 1(312) 455-8498 (outside USA)

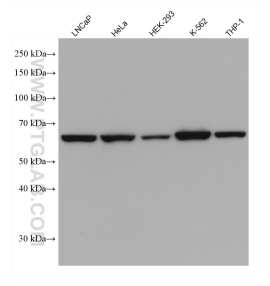
E: [proteintech@ptglab.com](mailto:proteintech@ptglab.com)  
W: [ptglab.com](http://ptglab.com)

This product is exclusively available under Proteintech Group brand and is not available to purchase from any other manufacturer.

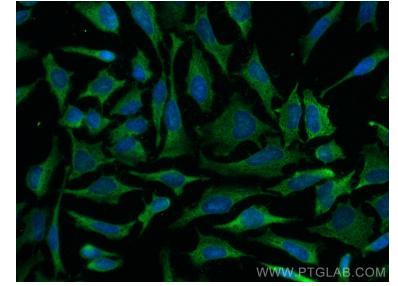
## Données de validation sélectionnées



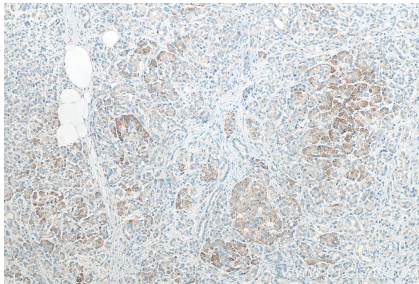
Immunofluorescent analysis of (4% PFA) fixed HeLa cells using CBS antibody (67861-1-Ig, Clone: 1E4F10) at dilution of 1:800 and CoraLite®488-Conjugated AffiniPure Goat Anti-Mouse IgG(H+L).



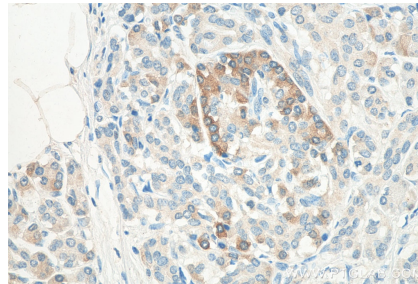
Various lysates were subjected to SDS PAGE followed by western blot with 67861-1-Ig (CBS antibody) at dilution of 1:20000 incubated at room temperature for 1.5 hours.



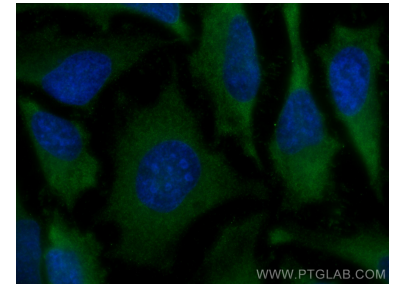
Immunofluorescent analysis of (-20°C Methanol) fixed HeLa cells using CBS antibody (67861-1-Ig, Clone: 1E4F10) at dilution of 1:800 and CoraLite®488-Conjugated AffiniPure Goat Anti-Mouse IgG(H+L).



Immunohistochemical analysis of paraffin-embedded human pancreas cancer tissue slide using 67861-1-Ig (CBS antibody) at dilution of 1:1000 (under 10x lens). Heat mediated antigen retrieval with Tris-EDTA buffer (pH 9.0).



Immunohistochemical analysis of paraffin-embedded human pancreas cancer tissue slide using 67861-1-Ig (CBS antibody) at dilution of 1:1000 (under 40x lens). Heat mediated antigen retrieval with Tris-EDTA buffer (pH 9.0).



Immunofluorescent analysis of (-20°C Methanol) fixed HeLa cells using CBS antibody (67861-1-Ig, Clone: 1E4F10) at dilution of 1:800 and CoraLite®488-Conjugated AffiniPure Goat Anti-Mouse IgG(H+L).