

À des fins de recherche uniquement

Anticorps Monoclonal anti-CSNK2B

Numéro de catalogue: 67866-1-Ig Phare



Informations de base

Numéro de catalogue: 67866-1-Ig	Numéro d'acquisition GenBank: BC112017	Méthode de purification: Purification par protéine G
Taille: 150ul, Concentration: 1000 µg/ml by Nanodrop;	Identification du gène (NCBI): 1460	CloneNo.: 1B5A6
Hôte: Mouse	Nom complet: casein kinase 2, beta polypeptide	Dilutions recommandées: WB 1:5000-1:20000 IHC 1:500-1:2000 IF 1:200-1:800
Isotype: IgG1	MW calculé: 215 aa, 25 kDa	
Immunogen Catalog Number: AG19180	MW observés: 27 kDa	

Applications

Applications testées:
IF, IHC, WB, ELISA

Spécificité de l'espèce:
Humain, porc, rat, souris

Remarque-IHC: il est suggéré de démasquer l'antigène avec un tampon de TE buffer pH 9,0; (*) À défaut, 'le démasquage de l'antigène peut être effectué avec un tampon citrate pH 6,0.

Contrôles positifs:

WB : cellules A549, cellules HeLa, cellules Jurkat, cellules LNCaP, cellules MCF-7, tissu cérébral de porc, tissu cérébral de rat, tissu cérébral de souris
IHC : tissu de cancer du sein humain, tissu de cancer du côlon humain
IF : cellules HeLa,

Informations générales

CSNK2B is a ubiquitous protein kinase which regulates metabolic pathways, signal transduction, transcription, translation, and replication. The enzyme is composed of three subunits, alpha, alpha prime and beta, which form a tetrameric holoenzyme. The alpha and alpha prime subunits are catalytic, while the beta subunit serves regulatory functions. The enzyme localizes to the endoplasmic reticulum and the Golgi apparatus. It participates in Wnt signaling, and plays a complex role in regulating the basal catalytic activity of the alpha subunit.

Stockage

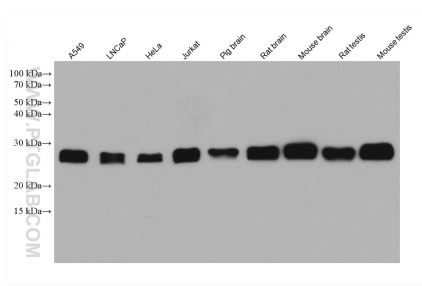
Stockage:
Stocker à -20°C. Stable pendant un an après l'expédition.
Tampon de stockage:
PBS avec azoture de sodium à 0,02 % et glycérol à 50 % pH 7,3
L'aliquotage n'est pas nécessaire pour le stockage à -20C

*** Les 20ul contiennent 0,1% de BSA.

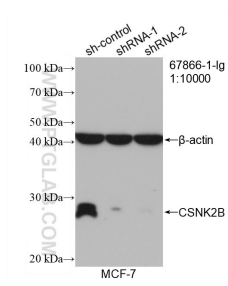
For technical support and original validation data for this product please contact:
T: 1 (888) 4PTGLAB (1-888-478-4522) (toll free in USA), or 1(312) 455-8498 (outside USA)
E: proteintech@ptglab.com
W: ptglab.com

This product is exclusively available under Proteintech Group brand and is not available to purchase from any other manufacturer.

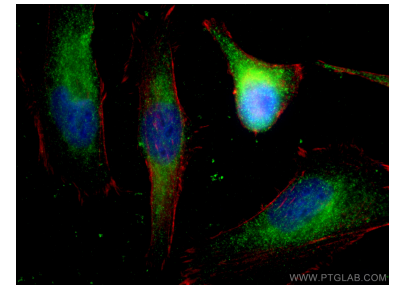
Données de validation sélectionnées



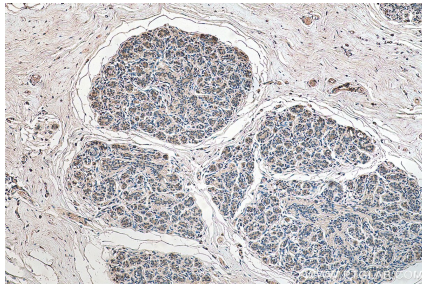
Various lysates were subjected to SDS PAGE followed by western blot with 67866-1-Ig (CSNK2B antibody) at dilution of 1:10000 incubated at room temperature for 1.5 hours.



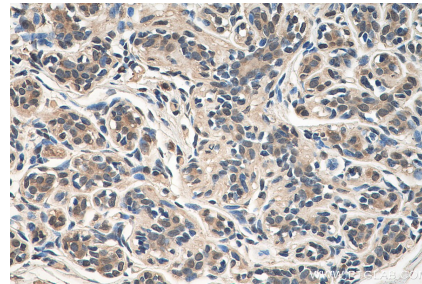
WB result of CSNK2B antibody (67866-1-Ig; 1:10000; incubated at room temperature for 1.5 hours) with sh-Control and sh-CSNK2B transfected MCF-7 cells.



Immunofluorescent analysis of (-20°C Ethanol) fixed HeLa cells using CSNK2B antibody (67866-1-Ig, Clone: 1B5A6) at dilution of 1:400 and CoraLite@488-Conjugated AffiniPure Goat Anti-Mouse IgG(H+L), CL594-Phalloidin (red).



Immunohistochemical analysis of paraffin-embedded human breast cancer tissue slide using 67866-1-Ig (CSNK2B antibody) at dilution of 1:1000 (under 10x lens). Heat mediated antigen retrieval with Tris-EDTA buffer (pH 9.0).



Immunohistochemical analysis of paraffin-embedded human breast cancer tissue slide using 67866-1-Ig (CSNK2B antibody) at dilution of 1:1000 (under 40x lens). Heat mediated antigen retrieval with Tris-EDTA buffer (pH 9.0).