

À des fins de recherche uniquement

Anticorps Monoclonal anti-GEMIN8

Numéro de catalogue: 67871-1-Ig



Informations de base

Numéro de catalogue: 67871-1-Ig	Numéro d'acquisition GenBank: BC003607	Méthode de purification: Purification par protéine G
Taille: 150ul , Concentration: 1000 µg/ml by Nanodrop;	Identification du gène (NCBI): 54960	CloneNo.: 1A6B4
Hôte: Mouse	Nom complet: gem (nuclear organelle) associated protein 8	Dilutions recommandées: WB 1:2000-1:10000 IF 1:200-1:800
Isotype: IgG1	MW calculé 29 kDa	
Immunogen Catalog Number: AG6774		

Applications

Applications testées: IF, WB, ELISA	Contrôles positifs:
Spécificité de l'espèce: Humain, rat, souris	WB : cellules NIH/3T3, cellules HeLa IF : cellules HepG2,

Informations générales

GEMIN8, also named as FAM51A1 and Gemin-8, is associated with the SMN complex and is localized in the cytoplasm and in the nucleus, where it is highly concentrated in Gems. Gemin6, Gemin7, and Unrip form a stable cytoplasmic complex whose association with SMN requires Gemin8. Gemin8 binds directly to SMN and mediates its interaction with the Gemin6/Gemin7 heterodimer. This antibody recognize GEMIN8(28-32kd) only.

Stockage

Stockage:
Stocker à -20 °C
Tampon de stockage:
PBS avec azoture de sodium à 0,02 % et glycérol à 50 % pH 7,3
L'aliquotage n'est pas nécessaire pour le stockage à -20C

*** Les 20ul contiennent 0,1% de BSA.

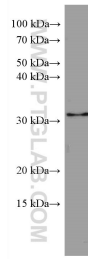
For technical support and original validation data for this product please contact:

T: 1 (888) 4PTGLAB (1-888-478-4522) (toll free
in USA), or 1(312) 455-8498 (outside USA)

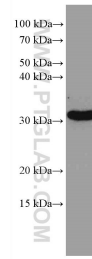
E: proteintech@ptglab.com
W: ptglab.com

This product is exclusively available under Proteintech Group brand and is not available to purchase from any other manufacturer.

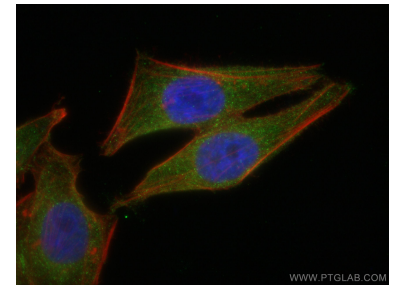
Données de validation sélectionnées



HeLa cells were subjected to SDS PAGE followed by western blot with 67871-1-Ig (GEMIN8 antibody) at dilution of 1:5000 incubated at room temperature for 1.5 hours.



NIH/3T3 cells were subjected to SDS PAGE followed by western blot with 67871-1-Ig (GEMIN8 antibody) at dilution of 1:5000 incubated at room temperature for 1.5 hours.



Immunofluorescent analysis of (4% PFA) fixed HepG2 cells using GEMIN8 antibody (67871-1-Ig, Clone: 1A6B4) at dilution of 1:400 and CoraLite®488-Conjugated AffiniPure Goat Anti-Mouse IgG(H+L), CL594-Phalloidin (red). DAPI (Blue).