

À des fins de recherche uniquement

# Anticorps Monoclonal anti-Cyclophilin A



Numéro de catalogue: 67880-1-Ig

## Informations de base

Numéro de catalogue: 67880-1-Ig	Numéro d'acquisition GenBank: BC005320	Méthode de purification: Purification par protéine A
Taille: 150ul , Concentration: 1000 µg/ml by Nanodrop;	Identification du gène (NCBI): 5478	CloneNo.: 2B11B9
Hôte: Mouse	Nom complet: peptidylprolyl isomerase A (cyclophilin A)	Dilutions recommandées: WB 1:5000-1:50000 IF 1:400-1:1600
Isotype: IgG1	MW calculé 18 kDa	
Immunogen Catalog Number: AG1120	MW observés: 18 kDa	

## Applications

Applications testées:  
FC, IF, WB, ELISA

Spécificité de l'espèce:  
Humain

### Contrôles positifs:

WB : cellules HepG2, cellules 4T1, cellules HEK-293, cellules HeLa, cellules HSC-T6, cellules Jurkat, cellules K-562, cellules NIH/3T3, cellules PC-12

IF : cellules HeLa,

## Informations générales

Cyclophilin A, also named as PPIA and Rotamase A, belongs to the cyclophilin-type PPIase family and PPIase A subfamily. PPIases accelerate the folding of proteins. It catalyzes the cis-trans isomerization of proline imidic peptide bonds in oligopeptides. PPIA forms a trimolecular complex with cyclophilin and calcineurins to inhibit calcineurin phosphatase activity. PPIA is incorporated into the virion of the type 1 human immunodeficiency virus (HIV-1) via a direct interaction with the capsid domain of the viral Gag polyprotein and is crucial for efficient viral replication.

## Stockage

Stockage:  
Stocker à -20°C. Stable pendant un an après l'expédition.

Tampon de stockage:  
PBS avec azoture de sodium à 0,02 % et glycérol à 50 % pH 7,3  
L'aliquotage n'est pas nécessaire pour le stockage à -20C

\*\*\* Les 20ul contiennent 0,1% de BSA.

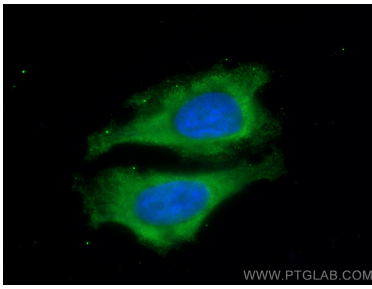
For technical support and original validation data for this product please contact:

T: 1 (888) 4PTGLAB (1-888-478-4522) (toll free  
in USA), or 1(312) 455-8498 (outside USA)

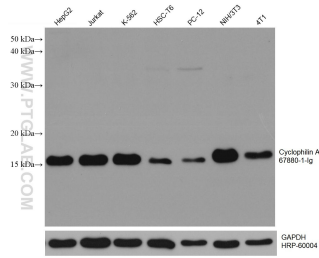
E: [proteintech@ptglab.com](mailto:proteintech@ptglab.com)  
W: [ptglab.com](http://ptglab.com)

This product is exclusively available under Proteintech Group brand and is not available to purchase from any other manufacturer.

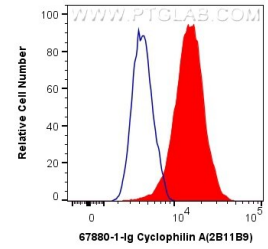
## Données de validation sélectionnées



Immunofluorescent analysis of (-20°C Methanol) fixed HeLa cells using Cyclophilin A antibody (67880-1-Ig, Clone: 2B11B9) at dilution of 1:800 and CoraLite@488-Conjugated AffiniPure Goat Anti-Mouse IgG(H+L).



Various lysates were subjected to SDS PAGE followed by western blot with 67880-1-Ig (CYPA antibody) at dilution of 1:20000 incubated at room temperature for 1.5 hours. The membrane was stripped and reblotted with HRP-conjugated GAPDH Monoclonal antibody (HRP-60004) as loading control.



1X10<sup>6</sup> HeLa cells were intracellularly stained with 0.4 ug Anti-Human Cyclophilin A (67880-1-Ig, Clone:2B11B9) and CoraLite@488-Conjugated AffiniPure Goat Anti-Mouse IgG(H+L) at dilution 1:1000 (red), or 0.4 ug Mouse IgG1 Isotype Control (MOPC-21) (65124-1-Ig, Clone: MOPC-21) (blue). Cells were fixed with 4% PFA and permeabilized with Flow Cytometry Perm Buffer (PF00011-C).