

À des fins de recherche uniquement

# Anticorps Monoclonal anti-ARL8B

Numéro de catalogue: 67891-1-Ig



## Informations de base

Numéro de catalogue: 67891-1-Ig	Numéro d'acquisition GenBank: BC013131	Méthode de purification: Purification par protéine A
Taille: 150ul , Concentration: 1000 µg/ml by Nanodrop;	Identification du gène (NCBI): 55207	CloneNo.: 2G10E2
Hôte: Mouse	Nom complet: ADP-ribosylation factor-like 8B	Dilutions recommandées: WB 1:5000-1:50000
Isotype: IgG2a	MW calculé: 186 aa, 22 kDa	
Immunogen Catalog Number: AG3711	MW observés: 22 kDa	

## Applications

Applications testées:  
WB, ELISA  
Spécificité de l'espèce:  
Humain, porc, rat, souris

Contrôles positifs:  
WB : cellules LNCaP, cellules HSC-T6, cellules Jurkat,  
cellules K-562, cellules NIH/3T3

## Informations générales

ARL8B ( ADP-ribosylation factor-like 8B) , also known as ARL10C or GIE1, is a small GTPase of the Arl-family, that is associated with the lysosome. ARL8A interacts with Tubulin, and plays a role in lysosome motility, as well as in chromosomal segregation. ARL8B plays a role in the spatial distribution and positioning of lysosomes. ARL8B is regarded as a regulator of endosome to lysosome trafficking pathways of special significance for host defense.

## Stockage

Stockage:  
Stocker à -20 °C  
Tampon de stockage:  
PBS avec azoture de sodium à 0,02 % et glycérol à 50 % pH 7,3  
L'aliquotage n'est pas nécessaire pour le stockage à -20C

\*\*\* Les 20ul contiennent 0,1% de BSA.

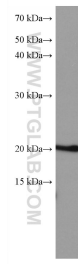
For technical support and original validation data for this product please contact:

T: 1 (888) 4PTGLAB (1-888-478-4522) (toll free  
in USA), or 1(312) 455-8498 (outside USA)

E: [proteintech@ptglab.com](mailto:proteintech@ptglab.com)  
W: [ptglab.com](http://ptglab.com)

This product is exclusively available under Proteintech Group brand and is not available to purchase from any other manufacturer.

## Données de validation sélectionnées



LNCaP cells were subjected to SDS PAGE followed by western blot with 67891-1-Ig (ARL8B antibody) at dilution of 1:10000 incubated at room temperature for 1.5 hours.