

À des fins de recherche uniquement

Anticorps Monoclonal anti-KBTBD2

Numéro de catalogue: 67895-1-Ig



Informations de base

Numéro de catalogue: 67895-1-Ig	Numéro d'acquisition GenBank: BC047107	Méthode de purification: Purification par protéine G
Taille: 150ul , Concentration: 1000 µg/ml by Nanodrop;	Identification du gène (NCBI): 25948	CloneNo.: 2A9F3
Hôte: Mouse	Nom complet: kelch repeat and BTB (POZ) domain containing 2	Dilutions recommandées: WB 1:1000-1:6000 IF 1:200-1:800
Isotype: IgG1	MW calculé 622 aa, 71 kDa	
Immunogen Catalog Number: AG4933	MW observés: 60-70 kDa	

Applications

Applications testées:
IF, WB, ELISA

Spécificité de l'espèce:
Humain, rat, souris

Contrôles positifs:

WB : cellules A549, cellules HeLa, cellules HSC-T6,
cellules Jurkat, cellules K-562, cellules U2OS

IF : cellules HeLa,

Informations générales

Kelch repeat and BTB domain containing 2 (KBTBD2), also known as BTB and kelch domain-containing protein 1, encodes a BTB-Kelch family subunit that p85 α -specific recognition for the Cullin3-based E3 ubiquitin ligase complex, which regulates p85 α protein ubiquitination and subsequently regulates phosphoinositide-3 kinases (PI3K) signaling (PMID:27708159). However, the expression profile and functional significance of Kbtbd2 is still largely unknown. The Human Protein Atlas which is an online source shows high Kbtbd2 expression in the spleen and thymus, suggesting that Kbtbd2 might involved in immunization (PMID:29331106). In addition, Kbtbd2 is related to Src-induced phosphorylation of protein, spermatogonial stem cell activity (PMID:15623525, 29331106).

Stockage

Stockage:
Stocker à -20°C. Stable pendant un an après l'expédition.
Tampon de stockage:
PBS avec azoture de sodium à 0,02 % et glycérol à 50 % pH 7,3
L'aliquotage n'est pas nécessaire pour le stockage à -20C

*** Les 20ul contiennent 0,1% de BSA.

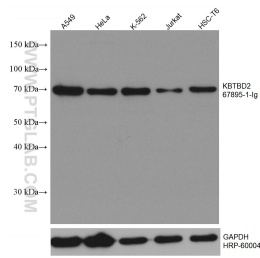
For technical support and original validation data for this product please contact:

T: 1 (888) 4PTGLAB (1-888-478-4522) (toll free
in USA), or 1(312) 455-8498 (outside USA)

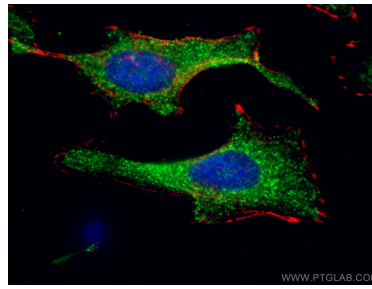
E: proteintech@ptglab.com
W: ptglab.com

This product is exclusively available under Proteintech Group brand and is not available to purchase from any other manufacturer.

Données de validation sélectionnées



Various lysates were subjected to SDS PAGE followed by western blot with 67895-1-Ig (KBTBD2 antibody) at dilution of 1:3000 incubated at room temperature for 1.5 hours. The membrane was stripped and reblotted with HRP-conjugated GAPDH Monoclonal antibody (HRP-60004) as loading control.



Immunofluorescent analysis of (-20°C Ethanol) fixed HeLa cells using KBTBD2 antibody (67895-1-Ig, Clone: 2A9F3) at dilution of 1:400 and CoraLite®488-Conjugated AffiniPure Goat Anti-Mouse IgG(H+L), CL594-Phalloidin (red). DAPI (blue).