

À des fins de recherche uniquement

Anticorps Monoclonal anti-Importin Alpha 5



Numéro de catalogue: 67897-1-Ig **Phare**

Informations de base

Numéro de catalogue: 67897-1-Ig	Numéro d'acquisition GenBank: BC002374	Méthode de purification: Purification par protéine A
Taille: 150ul, Concentration: 1000 µg/ml by Nanodrop;	Identification du gène (NCBI): 3836	CloneNo.: 2A7G7
Hôte: Mouse	Nom complet: karyopherin alpha 1 (importin alpha 5)	Dilutions recommandées: WB 1:5000-1:50000 IHC 1:500-1:2000 IF 1:200-1:800
Isotype: IgG2a	MW calculé: 60 kDa	
Immunogen Catalog Number: AG12751	MW observés: 60-62 kDa	

Applications

Applications testées:

IF, IHC, WB, ELISA

Spécificité de l'espèce:

Humain, rat, souris

Remarque-IHC: il est suggéré de démasquer l'antigène avec un tampon de TE buffer pH 9,0; (*) À défaut, 'le démasquage de l'antigène peut être effectué avec un tampon citrate pH 6,0.

Contrôles positifs:

WB : cellules HCT 116, cellules 4T1, cellules HeLa, cellules HepG2, cellules HSC-T6, cellules Jurkat, cellules K-562, cellules NIH/3T3, cellules PC-12

IHC : tissu testiculaire de souris,

IF : cellules MCF-7,

Informations générales

Importins (alpha and beta) are transport factors that transport proteins into the nucleus. alpha importins function by binding transcription factors at nuclear localization sequences (NLS), and associating with importin beta subunits to translocate through the nuclear pore. Six isoforms of alpha importins have been described in human. Importin alpha 5 is the predominant importin in adult CNS and is essential for differentiation and viability of neural cells.

Stockage

Stockage:

Stocker à -20°C. Stable pendant un an après l'expédition.

Tampon de stockage:

PBS avec azoture de sodium à 0,02 % et glycérol à 50 % pH 7,3

L'aliquotage n'est pas nécessaire pour le stockage à -20C

***** Les 20ul contiennent 0,1% de BSA.**

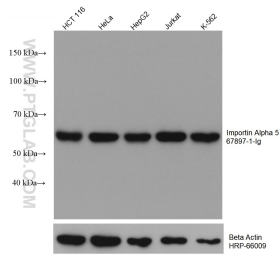
For technical support and original validation data for this product please contact:

T: 1 (888) 4PTGLAB (1-888-478-4522) (toll free in USA), or 1(312) 455-8498 (outside USA)

E: proteintech@ptglab.com
W: ptglab.com

This product is exclusively available under Proteintech Group brand and is not available to purchase from any other manufacturer.

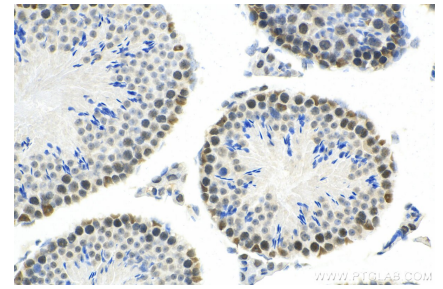
Données de validation sélectionnées



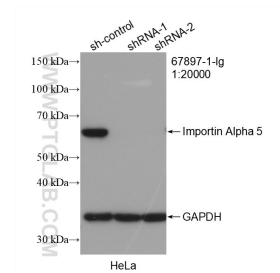
Various lysates were subjected to SDS PAGE followed by western blot with 67897-1-Ig (KPNA1 antibody) at dilution of 1:10000 incubated at room temperature for 1.5 hours. The membrane was stripped and reblotted with HRP-conjugated Beta Actin Monoclonal antibody (HRP-66009) as loading control.



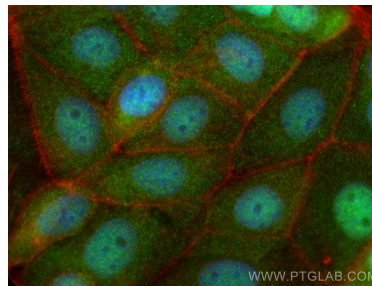
Immunofluorescent analysis of (4% PFA) fixed MCF-7 cells using Importin Alpha 5 antibody (67897-1-Ig, Clone: 2A7G7) at dilution of 1:400 and CoraLite®488-Conjugated AffiniPure Goat Anti-Mouse IgG(H+L), CL594-Phalloidin (red).



Immunohistochemical analysis of paraffin-embedded mouse testis tissue slide using 67897-1-Ig (Importin Alpha 5 antibody) at dilution of 1:1000 (under 40x lens). Heat mediated antigen retrieval with Tris-EDTA buffer (pH 9.0).



WB result of Importin Alpha 5 antibody (67897-1-Ig; 1:20000; incubated at room temperature for 1.5 hours) with sh-Control and sh-Importin Alpha 5 transfected HeLa cells.



Immunofluorescent analysis of (4% PFA) fixed MCF-7 cells using Importin Alpha 5 antibody (67897-1-Ig, Clone: 2A7G7) at dilution of 1:800 and CoraLite®488-Conjugated AffiniPure Goat Anti-Mouse IgG(H+L), CL594-Phalloidin (red).