

À des fins de recherche uniquement

Anticorps Monoclonal anti-RAB11A

Numéro de catalogue: 67902-1-Ig



Informations de base

Numéro de catalogue: 67902-1-Ig	Numéro d'acquisition GenBank: BC013348	Méthode de purification: Purification par protéine G
Taille: 150ul , Concentration: 1000 µg/ml by Nanodrop;	Identification du gène (NCBI): 8766	CloneNo.: 4A4C9
Hôte: Mouse	Nom complet: RAB11A, member RAS oncogene family	Dilutions recommandées: WB 1:5000-1:20000 IF 1:200-1:800
Isotype: IgG1	MW calculé 216 aa, 24 kDa	
Immunogen Catalog Number: AG8879	MW observés: 24 kDa	

Applications

Applications testées:

IF, WB, ELISA

Spécificité de l'espèce:

Humain, porc, rat, souris

Contrôles positifs:

WB : tissu cérébral de souris, cellules A431, cellules A549, cellules HeLa, cellules HepG2, cellules K-562, tissu cérébral de rat, tissu de cervelet de rat

IF : cellules HeLa,

Informations générales

Rab11a, Rab11b and Rab25 comprise a subfamily of Rab proteins that belong to the Ras-related small GTPase protein superfamily (PMID: 8074219, PMID: 10708602). Rab11 proteins are involved in endocytosis and plasma membrane recycling in non-polarized and polarized cells (PMID: 8638719, PMID: 8922376). Rab11a and Rab11b are ubiquitously expressed in most tissues, while Rab25 is only expressed in epithelial cells. Rab11a is known to regulate the recycling of internalized cell surface proteins and receptors from the early endosome through the trans-Golgi network (PMID: 11121436, PMID: 9600939).

Stockage

Stockage:

Stocker à -20°C. Stable pendant un an après l'expédition.

Tampon de stockage:

PBS avec azoture de sodium à 0,02 % et glycérol à 50 % pH 7,3

L'aliquotage n'est pas nécessaire pour le stockage à -20C

*** Les 20ul contiennent 0,1% de BSA.

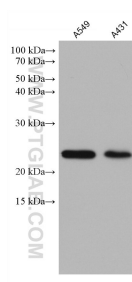
For technical support and original validation data for this product please contact:

T: 1 (888) 4PTGLAB (1-888-478-4522) (toll free in USA), or 1(312) 455-8498 (outside USA)

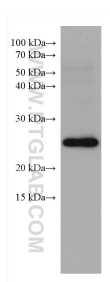
E: proteintech@ptglab.com
W: ptglab.com

This product is exclusively available under Proteintech Group brand and is not available to purchase from any other manufacturer.

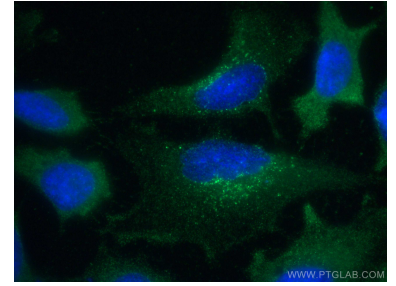
Données de validation sélectionnées



Various lysates were subjected to SDS PAGE followed by western blot with 67902-1-Ig (RAB11A antibody) at dilution of 1:10000 incubated at room temperature for 1.5 hours.



mouse brain tissue were subjected to SDS PAGE followed by western blot with 67902-1-Ig (RAB11A antibody) at dilution of 1:10000 incubated at room temperature for 1.5 hours.



Immunofluorescent analysis of (-20°C Methanol) fixed HeLa cells using RAB11A antibody (67902-1-Ig, Clone: 4A4C9) at dilution of 1:400 and CoraLite®488-Conjugated AffiniPure Goat Anti-Mouse IgG(H+L).