

À des fins de recherche uniquement

Anticorps Monoclonal anti-MRPS25

Numéro de catalogue: 67903-1-Ig **Phare**



Informations de base

Numéro de catalogue: 67903-1-Ig	Numéro d'acquisition GenBank: BC003590	Méthode de purification: Purification par protéine A
Taille: 150ul , Concentration: 1000 µg/ml by Nanodrop;	Identification du gène (NCBI): 64432	CloneNo.: 3B10B6
Hôte: Mouse	Nom complet: mitochondrial ribosomal protein S25	Dilutions recommandées: WB 1:2000-1:10000
Isotype: IgG2b	MW calculé 20 kDa	
Immunogen Catalog Number: AG7846	MW observés: 20 kDa	

Applications

Applications testées:
WB, ELISA
Spécificité de l'espèce:
Humain, rat, souris

Contrôles positifs:

WB : cellules HeLa, cellules 4T1, cellules HepG2,
cellules HSC-T6, cellules Jurkat, cellules K-562,
cellules NIH/3T3, cellules PC-12

Informations générales

Mitochondrial ribosomal protein S25 (MRPS25) belongs to the ribosomal protein S25/L51 family. It is a component of the mitochondrial ribosome small subunit (28S). The variant segregated with the disease and substitutes a highly conserved proline residue with leucine (p.P72L) that, based on the high-resolution structure of the 28S ribosome, is predicted to compromise inter-protein contacts and destabilize the small subunit.

Stockage

Stockage:
Stocker à -20°C. Stable pendant un an après l'expédition.
Tampon de stockage:
PBS avec azoture de sodium à 0,02 % et glycérol à 50 % pH 7,3
L'aliquotage n'est pas nécessaire pour le stockage à -20C

***** Les 20ul contiennent 0,1% de BSA.**

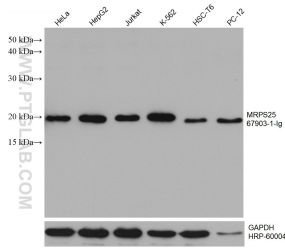
For technical support and original validation data for this product please contact:

T: 1 (888) 4PTGLAB (1-888-478-4522) (toll free
in USA), or 1(312) 455-8498 (outside USA)

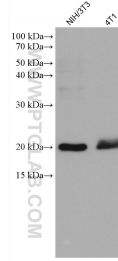
E: proteintech@ptglab.com
W: ptglab.com

This product is exclusively available under Proteintech Group brand and is not available to purchase from any other manufacturer.

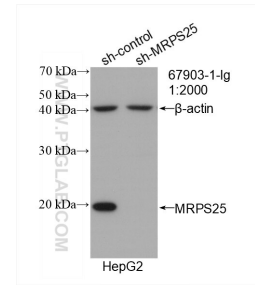
Données de validation sélectionnées



Various lysates were subjected to SDS PAGE followed by western blot with 67903-1-Ig (MRPS25 antibody) at dilution of 1:5000 incubated at room temperature for 1.5 hours. The membrane was stripped and reblotted with HRP-conjugated GAPDH Monoclonal antibody (HRP-60004) as loading control.



Various lysates were subjected to SDS PAGE followed by western blot with 67903-1-Ig (MRPS25 antibody) at dilution of 1:5000 incubated at room temperature for 1.5 hours.



WB result of MRPS25 antibody (67903-1-Ig; 1:2000; incubated at room temperature for 1.5 hours) with sh-Control and sh-MRPS25 transfected HepG2 cells.