

À des fins de recherche uniquement

Anticorps Monoclonal anti-PSMA1

Numéro de catalogue: 67910-1-Ig



Informations de base

Numéro de catalogue: 67910-1-Ig	Numéro d'acquisition GenBank: BC015105	Méthode de purification: Purification par protéine A
Taille: 150ul , Concentration: 500 µg/ml by Nanodrop;	Identification du gène (NCBI): 5682	CloneNo.: 1D1D5
Hôte: Mouse	Nom complet: proteasome (prosome, macropain) subunit, alpha type, 1	Dilutions recommandées: WB 1:5000-1:50000 IHC 1:500-1:2000
Isotype: IgG2b	MW calculé 30 kDa	
Immunogen Catalog Number: AG30527	MW observés: 29-33 kDa	

Applications

Applications testées:
IHC, WB, ELISA

Spécificité de l'espèce:
Humain, rat, souris

Remarque-IHC: il est suggéré de démasquer l'antigène avec un tampon de TE buffer pH 9,0; (*) À défaut, 'le démasquage de l'antigène peut être effectué avec un tampon citrate pH 6,0.

Contrôles positifs:

WB : cellules LNCaP, cellules 4T1, cellules HeLa, cellules HepG2, cellules HSC-T6, cellules Jurkat, cellules K-562, cellules NIH/3T3, cellules RAW 264.7

IHC : tissu de cancer du côlon humain,

Informations générales

PSMA1(Proteasome subunit alpha type-1) is also named as HC2, NU, PROS30, PSC2 and belongs to the peptidase T1A family. The proteasome is a multicatalytic proteinase complex which is characterized by its ability to cleave peptides with Arg, Phe, Tyr, Leu, and Glu adjacent to the leaving group at neutral or slightly basic pH. It is induced in breast cancer tissue and up-regulated in liver tumor tissues (PMID:17127214;16317774;17004105).

Stockage

Stockage:

Stocker à -20°C. Stable pendant un an après l'expédition.

Tampon de stockage:

PBS avec azoture de sodium à 0,02 % et glycérol à 50 % pH 7,3

L'aliquotage n'est pas nécessaire pour le stockage à -20C

***** Les 20ul contiennent 0,1% de BSA.**

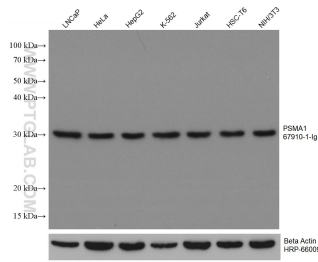
For technical support and original validation data for this product please contact:

T: 1 (888) 4PTGLAB (1-888-478-4522) (toll free in USA), or 1(312) 455-8498 (outside USA)

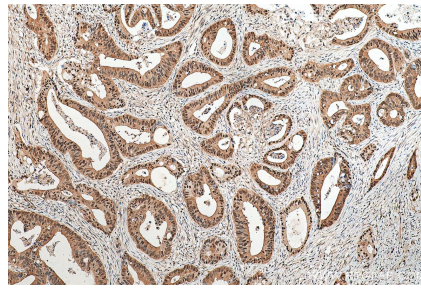
E: proteintech@ptglab.com
W: ptglab.com

This product is exclusively available under Proteintech Group brand and is not available to purchase from any other manufacturer.

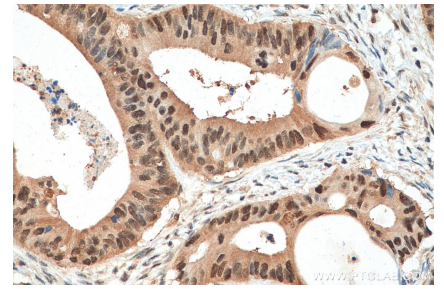
Données de validation sélectionnées



Various lysates were subjected to SDS PAGE followed by western blot with 67910-1-Ig (PSMA1 antibody) at dilution of 1:10000 incubated at room temperature for 1.5 hours. The membrane was stripped and reblotted with HRP-conjugated Beta Actin Monoclonal antibody (HRP-66009) as loading control.



Immunohistochemical analysis of paraffin-embedded human colon cancer tissue slide using 67910-1-Ig (PSMA1 antibody) at dilution of 1:1000 (under 10x lens). Heat mediated antigen retrieval with Tris-EDTA buffer (pH 9.0).



Immunohistochemical analysis of paraffin-embedded human colon cancer tissue slide using 67910-1-Ig (PSMA1 antibody) at dilution of 1:1000 (under 40x lens). Heat mediated antigen retrieval with Tris-EDTA buffer (pH 9.0).