

À des fins de recherche uniquement

Anticorps Monoclonal anti-YTHDC1

Numéro de catalogue: 67911-1-Ig



Informations de base

Numéro de catalogue: 67911-1-Ig	Numéro d'acquisition GenBank: BC053863	Méthode de purification: Purification par protéine G
Taille: 150ul, Concentration: 1000 µg/ml by Nanodrop;	Identification du gène (NCBI): 91746	CloneNo.: 1F5G11
Hôte: Mouse	Nom complet: YTH domain containing 1	Dilutions recommandées: WB 1:2000-1:10000 IHC 1:2000-1:8000
Isotype: IgG1	MW calculé: 85 kDa	
Immunogen Catalog Number: AG6289	MW observés: ~100 kDa	

Applications

Applications testées:

IHC, WB, ELISA

Spécificité de l'espèce:

Humain, souris

Remarque-IHC: il est suggéré de démasquer l'antigène avec un tampon de TE buffer pH 9,0; (*) À défaut, 'le démasquage de l'antigène peut être effectué avec un tampon citrate pH 6,0.

Contrôles positifs:

WB : cellules LNCaP, cellules HEK-293, cellules HeLa, cellules Jurkat, cellules K-562, cellules MDA-MB-231

IHC : tissu de cancer du sein humain, tissu de cancer du col de l'utérus humain, tissu testiculaire de souris

Informations générales

YTHDC1, containing 1 YTH domain, is one of the m6A-binding proteins that can recognize and bind to the m6A methylation site and plays a specific role in gene expression. YTHDC1 is constitutively enriched in the nucleus. It regulates mRNA splicing by bridging the interactions between the trans- and cis-regulatory elements to bind targeted mRNAs. YTHDC1 mediates the export of m6A modified mRNA from the nucleus to the cytoplasm by interacting with SRSF3, which is an essential factor driving the tumorigenic process in various types of cancers including breast cancer, colon cancer, ovarian cancer, osteosarcoma, and glioblastoma (32368386).

Stockage

Stockage:

Stocker à -20°C. Stable pendant un an après l'expédition.

Tampon de stockage:

PBS avec azoture de sodium à 0,02 % et glycérol à 50 % pH 7,3

L'aliquotage n'est pas nécessaire pour le stockage à -20C

*** Les 20ul contiennent 0,1% de BSA.

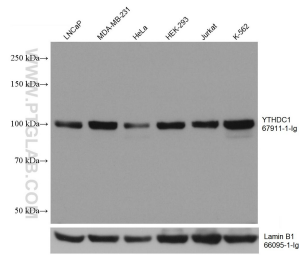
For technical support and original validation data for this product please contact:

T: 1 (888) 4PTGLAB (1-888-478-4522) (toll free in USA), or 1(312) 455-8498 (outside USA)

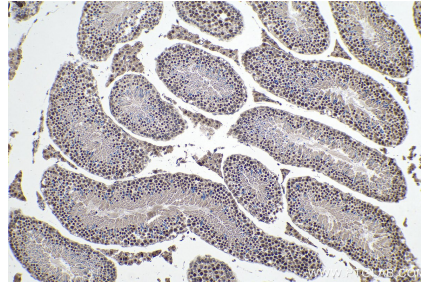
E: proteintech@ptglab.com
W: ptglab.com

This product is exclusively available under Proteintech Group brand and is not available to purchase from any other manufacturer.

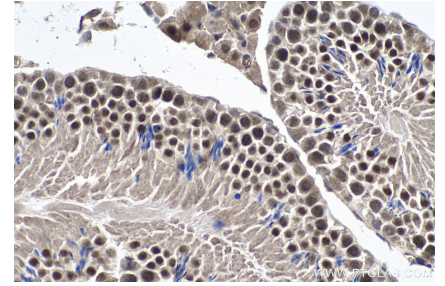
Données de validation sélectionnées



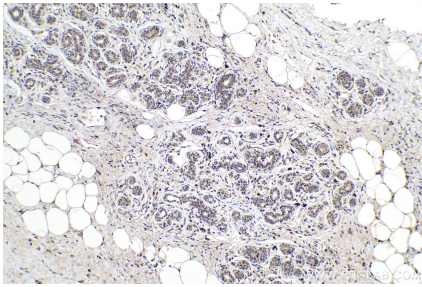
Various lysates were subjected to SDS PAGE followed by western blot with 67911-1-Ig (YTHDC1 antibody) at dilution of 1:5000 incubated at room temperature for 1.5 hours. The membrane was stripped and reblotted with Lamin B1 Monoclonal antibody (66095-1-Ig) as loading control.



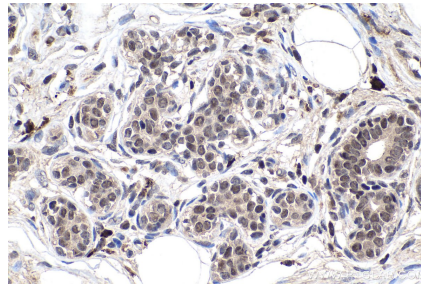
Immunohistochemical analysis of paraffin-embedded mouse testis tissue slide using 67911-1-Ig (YTHDC1 antibody) at dilution of 1:4000 (under 10x lens). Heat mediated antigen retrieval with Tris-EDTA buffer (pH 9.0).



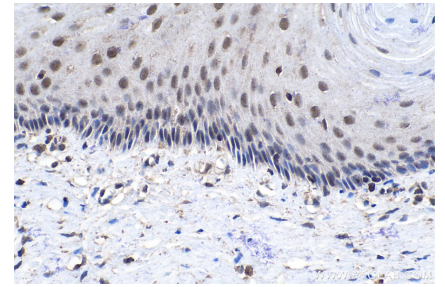
Immunohistochemical analysis of paraffin-embedded mouse testis tissue slide using 67911-1-Ig (YTHDC1 antibody) at dilution of 1:4000 (under 40x lens). Heat mediated antigen retrieval with Tris-EDTA buffer (pH 9.0).



Immunohistochemical analysis of paraffin-embedded human breast cancer tissue slide using 67911-1-Ig (YTHDC1 antibody) at dilution of 1:4000 (under 10x lens). Heat mediated antigen retrieval with Tris-EDTA buffer (pH 9.0).



Immunohistochemical analysis of paraffin-embedded human breast cancer tissue slide using 67911-1-Ig (YTHDC1 antibody) at dilution of 1:4000 (under 40x lens). Heat mediated antigen retrieval with Tris-EDTA buffer (pH 9.0).



Immunohistochemical analysis of paraffin-embedded human cervical cancer tissue slide using 67911-1-Ig (YTHDC1 antibody) at dilution of 1:4000 (under 40x lens). Heat mediated antigen retrieval with Tris-EDTA buffer (pH 9.0).