

À des fins de recherche uniquement

Anticorps Monoclonal anti-PGD

Numéro de catalogue: 67916-1-Ig



Informations de base

Numéro de catalogue: 67916-1-Ig	Numéro d'acquisition GenBank: BC000368	Méthode de purification: Purification par protéine G
Taille: 150ul, Concentration: 1000 µg/ml by Nanodrop;	Identification du gène (NCBI): 5226	CloneNo.: 2A10G4
Hôte: Mouse	Nom complet: phosphogluconate dehydrogenase	Dilutions recommandées: WB 1:5000-1:50000 IF 1:400-1:1600
Isotype: IgG1	MW calculé: 53 kDa	
Immunogen Catalog Number: AG6871	MW observés: 53 kDa, 45 kDa	

Applications

Applications testées:
IF, WB, ELISA

Spécificité de l'espèce:
Humain

Contrôles positifs:

WB : cellules LNCaP, cellules HEK-293, cellules HeLa, cellules Jurkat, cellules K-562

IF : cellules HepG2,

Informations générales

PGD, also named as PGDH, belongs to the 6-phosphogluconate dehydrogenase family. PGD catalyses the oxidative decarboxylation of 6-phosphogluconate to ribulose 5-phosphate in the context of the oxidative part of the pentose phosphate pathway. PGD is important for the production of NADPH, which is necessary for reductive biosynthesis, such as the formation of lipids and nucleotides, and the activity of enzymes involved in maintaining cell integrity, in combatting oxidative stress and in the first line of immunological defence. (PMID: 35234135)

Stockage

Stockage:
Stocker à -20 °C.

Tampon de stockage:
PBS avec azoture de sodium à 0,02 % et glycérol à 50 % pH 7,3

L'aliquotage n'est pas nécessaire pour le stockage à -20C

***** Les 20ul contiennent 0,1% de BSA.**

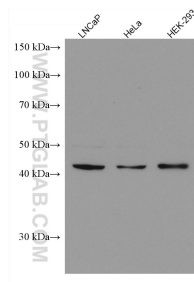
For technical support and original validation data for this product please contact:

T: 1 (888) 4PTGLAB (1-888-478-4522) (toll free in USA), or 1(312) 455-8498 (outside USA)

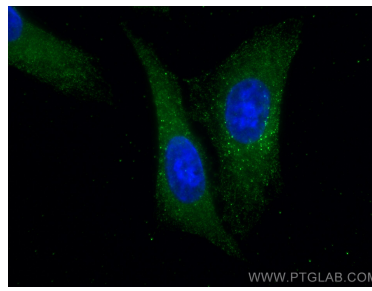
E: proteintech@ptglab.com
W: ptglab.com

This product is exclusively available under Proteintech Group brand and is not available to purchase from any other manufacturer.

Données de validation sélectionnées



Various lysates were subjected to SDS PAGE followed by western blot with 67916-1-Ig (PGD antibody) at dilution of 1:25000 incubated at room temperature for 1.5 hours.



Immunofluorescent analysis of (-20°C Methanol) fixed HepG2 cells using PGD antibody (67916-1-Ig, Clone: 2A10G4) at dilution of 1:800 and CoraLite®488-Conjugated AffiniPure Goat Anti-Mouse IgG(H+L).