

À des fins de recherche uniquement

Anticorps Monoclonal anti-PSME1

Numéro de catalogue: 67928-1-Ig



Informations de base

Numéro de catalogue: 67928-1-Ig	Numéro d'acquisition GenBank: BC007503	Méthode de purification: Purification par protéine G
Taille: 150ul , Concentration: 1000 µg/ml by Nanodrop;	Identification du gène (NCBI): 5720	CloneNo.: 1F7E2
Hôte: Mouse	Nom complet: proteasome (prosome, macropain) activator subunit 1 (PA28 alpha)	Dilutions recommandées: WB 1:5000-1:50000 IF 1:500-1:2000
Isotype: IgG1	MW calculé 29 kDa	
Immunogen Catalog Number: AG30549	MW observés: 29 kDa	

Applications

Applications testées:
IF, WB, ELISA

Spécificité de l'espèce:
Humain, souris

Contrôles positifs:

WB : cellules MDA-MB-231, cellules C6, cellules HEK-293, cellules HeLa, cellules HSC-T6, cellules Jurkat, cellules K-562, cellules NIH/3T3 et cellules 4T1

IF : cellules MCF-7,

Informations générales

The principal function of the proteasome is targeted degradation of intracellular proteins. Activity of the 20S proteasome is controlled by regulatory complexes that bind to the ends of the cylindrical proteasome. 11S regulator (REG or PA28), is a complex of 28 kDa subunits that is thought to activate proteasomes toward the production of antigenic peptides. Human PSME1 and PSME2 genes encode the two proteasome activators PA28 alpha and beta, respectively, which have been implicated in antigen processing for loading class I MHC molecules. The PA28 activator complex enhances the generation of class I binding peptides by altering the cleavage pattern of the proteasome.

Stockage

Stockage:
Stocker à -20°C. Stable pendant un an après l'expédition.

Tampon de stockage:
PBS avec azoture de sodium à 0,02 % et glycérol à 50 % pH 7,3
L'aliquotage n'est pas nécessaire pour le stockage à -20C

*** Les 20ul contiennent 0,1% de BSA.

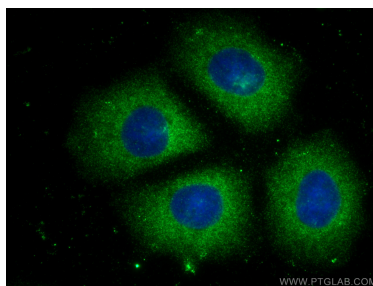
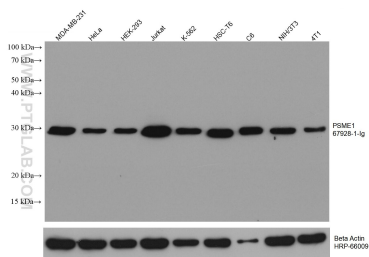
For technical support and original validation data for this product please contact:

T: 1 (888) 4PTGLAB (1-888-478-4522) (toll free
in USA), or 1(312) 455-8498 (outside USA)

E: proteintech@ptglab.com
W: ptglab.com

This product is exclusively available under Proteintech Group brand and is not available to purchase from any other manufacturer.

Données de validation sélectionnées



Various lysates were subjected to SDS PAGE followed by western blot with 67928-1-Ig (PSME1 antibody) at dilution of 1:10000 incubated at room temperature for 1.5 hours. The membrane was stripped and reblotted with HRP-conjugated Beta Actin Monoclonal antibody (HRP-66009) as loading control.

Immunofluorescent analysis of (-20°C Methanol) fixed MCF-7 cells using PSME1 antibody (67928-1-Ig, Clone: 1F7E2) at dilution of 1:1000 and CoraLite®488-Conjugated AffiniPure Goat Anti-Mouse IgG(H+L).