

À des fins de recherche uniquement

# Anticorps Monoclonal anti-SETD1A

Numéro de catalogue: 67936-1-Ig **Phare**



## Informations de base

Numéro de catalogue: 67936-1-Ig	Numéro d'acquisition GenBank: NM_014712	Méthode de purification: Purification par protéine G
Taille: 150ul , Concentration: 1000 µg/ml by Nanodrop;	Identification du gène (NCBI): 9739	CloneNo.: 1C2G12
Hôte: Mouse	Nom complet: SET domain containing 1A	Dilutions recommandées: WB 1:5000-1:50000
Isotype: IgG1	MW calculé: 186 kDa	
Immunogen Catalog Number: AG30424	MW observés: 270 kDa	

## Applications

Applications testées:  
WB, ELISA

Spécificité de l'espèce:  
Humain, rat, souris

Contrôles positifs:

WB : cellules HeLa, cellules HEK-293, cellules HepG2, cellules HSC-T6, cellules Jurkat, cellules K-562, cellules LNCaP, cellules NIH/3T3, tissu cérébral de souris

## Informations générales

SETD1A is a SET domain-containing methyltransferase involved in the epigenetic regulation of transcription (PMID:12670868). It is the main catalytic component of a multiprotein complex that methylates lysine 4 of histone H3, a histone mark associated with gene activation (PMID:29937342). Responsible for H3K4me3 enriched promoters and transcriptional programming of inner mass stem cells and neuron progenitors during embryogenesis (PMID:31197650). Does not methylate 'Lys-4' of histone H3 if the neighboring 'Lys-9' residue is already methylated (PubMed:12670868). SETD1A has a calculated molecular weight of 186 kDa, and a 258 kDa band was also reported (PMID: 31076518).

## Stockage

Stockage:

Stocker à -20°C. Stable pendant un an après l'expédition.

Tampon de stockage:

PBS avec azoture de sodium à 0,02 % et glycérol à 50 % pH 7,3

L'aliquotage n'est pas nécessaire pour le stockage à -20C

**\*\*\* Les 20ul contiennent 0,1% de BSA.**

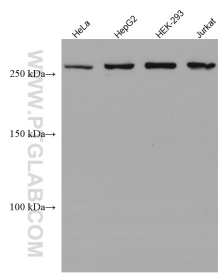
For technical support and original validation data for this product please contact:

T: 1 (888) 4PTGLAB (1-888-478-4522) (toll free in USA), or 1(312) 455-8498 (outside USA)

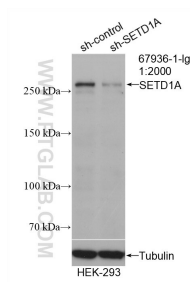
E: [proteintech@ptglab.com](mailto:proteintech@ptglab.com)  
W: [ptglab.com](http://ptglab.com)

**This product is exclusively available under Proteintech Group brand and is not available to purchase from any other manufacturer.**

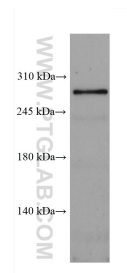
## Données de validation sélectionnées



Various lysates were subjected to SDS PAGE followed by western blot with 67936-1-Ig (SETD1A antibody) at dilution of 1:10000 and incubated at room temperature for 1.5 hours.



WB result of SETD1A antibody (67936-1-Ig; 1:2000; incubated at room temperature for 1.5 hours) with sh-Control and sh-SETD1A transfected HEK-293 cells.



Mouse brain tissue was subjected to SDS PAGE followed by western blot with 67936-1-Ig (SETD1A antibody) at a dilution of 1:3000 and incubated at room temperature for 1.5 hours.