

À des fins de recherche uniquement

Anticorps Monoclonal anti-ATG16L1



Numéro de catalogue: 67943-1-Ig **3 Publications**

Informations de base

Numéro de catalogue: 67943-1-Ig	Numéro d'acquisition GenBank: BC000061	Méthode de purification: Purification par protéine G
Taille: 150ul , Concentration: 1000 µg/ml by Nanodrop;	Identification du gène (NCBI): 55054	CloneNo.: 1G5G7
Hôte: Mouse	Nom complet: ATG16 autophagy related 16-like 1 (S.cerevisiae)	Dilutions recommandées: IF 1:200-1:800
Isotype: IgG1	MW calculé: 607 aa, 68 kDa	
Immunogen Catalog Number: AG14881	MW observés: 68-75 kDa	

Applications

Applications testées: IF, WB, ELISA	Contrôles positifs:
Demandes citées: WB	WB : cellules HSC-T6, cellules 4T1, cellules HepG2, cellules NIH/3T3, cellules PC-12, tissu pulmonaire de rat
Spécificité de l'espèce: Humain, rat, souris	IF : cellules HepG2,
Espèces citées: Humain, porc	

Informations générales

Human ATG16L1 is a 607 amino acid protein (~68 kDa) comprising three major domains: the N-terminal ATG5 binding domain (ATG5-BD), the central coiled-coil domain (CCD) and a predicted C-terminal WD40-domain. ATG16L1 α and β (Atg16L1 α , 63 kDa; and Atg16L1 β , 71 kDa) are the major isoforms expressed in intestinal epithelium and macrophages, and all isoforms encode exon 9, which contains Thr 300. Atg16L1 mediates the cellular degradative process of autophagy and is considered a critical regulator of inflammation based on its genetic association with inflammatory bowel disease. ATG16L1 has been implicated in Crohn's disease. (PMID: 24553140, PMID: 22740627, PMID: 28685931)

Publications notables

Autrice	Pubmed ID	Journal	Application
Nengwen Xia	36311807	Front Immunol	WB
Fang Wen	36117315	Epileptic Disord	WB
Su-Hyeong Kim	37265428	Mol Carcinog	WB

Stockage

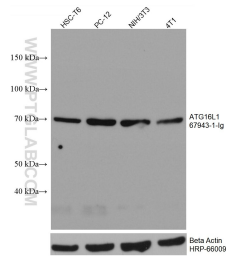
Stockage:
Stocker à -20°C. Stable pendant un an après l'expédition.
Tampon de stockage:
PBS avec azoture de sodium à 0,02 % et glycérol à 50 % pH 7,3
L'aliquotage n'est pas nécessaire pour le stockage à -20°C

*** Les 20ul contiennent 0,1% de BSA.

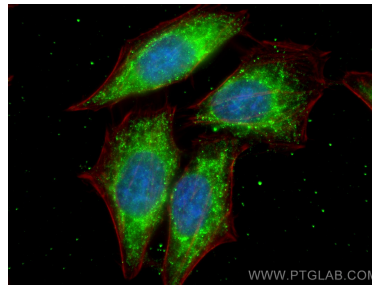
For technical support and original validation data for this product please contact:
T: 1 (888) 4PTGLAB (1-888-478-4522) (toll free in USA), or 1(312) 455-8498 (outside USA)
E: proteintech@ptglab.com
W: ptglab.com

This product is exclusively available under Proteintech Group brand and is not available to purchase from any other manufacturer.

Données de validation sélectionnées



Various lysates were subjected to SDS PAGE followed by western blot with 67943-1-ig (ATG16L1 antibody) at dilution of 1:3000 incubated at room temperature for 1.5 hours. The membrane was stripped and reblotted with HRP-conjugated Beta Actin Monoclonal antibody (HRP-66009) as loading control.



Immunofluorescent analysis of (-20°C Ethanol) fixed HepG2 cells using ATG16L1 antibody (67943-1-ig, Clone: 1G5G7) at dilution of 1:400 and CoraLite®488-Conjugated AffiniPure Goat Anti-Mouse IgG(H+L), CL594-Phalloidin (red).