

À des fins de recherche uniquement

Anticorps Monoclonal anti-ABCE1

Numéro de catalogue: 67960-1-Ig



Informations de base

Numéro de catalogue: 67960-1-Ig	Numéro d'acquisition GenBank: BC016283	Méthode de purification: Purification par protéine A
Taille: 150ul , Concentration: 1000 µg/ml by Nanodrop;	Identification du gène (NCBI): 6059	CloneNo.: 1B7E8
Hôte: Mouse	Nom complet: ATP-binding cassette, sub-family E (OABP), member 1	Dilutions recommandées: WB 1:5000-1:50000 IF 1:200-1:800
Isotype: IgG2b	MW calculé 599 aa, 67 kDa	
Immunogen Catalog Number: AG28493	MW observés: 68 kDa	

Applications

Applications testées:
IF, WB, ELISA

Spécificité de l'espèce:
Humain, rat, souris

Contrôles positifs:

WB : cellules HepG2, cellules 4T1, cellules A431, cellules HSC-T6, cellules Jurkat, cellules K-562, cellules NIH/3T3, cellules U2OS

IF : cellules U2OS,

Informations générales

ABCE1 is an ATPase that is a member of the ATP-binding cassette (ABC) transporters superfamily and OABP subfamily, it is an essential and highly conserved protein that is required for both eukaryotic translation initiation as well as ribosome biogenesis.

Stockage

Stockage:
Stocker à -20°C. Stable pendant un an après l'expédition.

Tampon de stockage:
PBS avec azoture de sodium à 0,02 % et glycérol à 50 % pH 7,3
L'aliquotage n'est pas nécessaire pour le stockage à -20C

*** Les 20ul contiennent 0,1% de BSA.

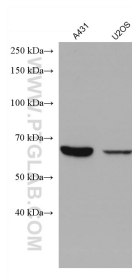
For technical support and original validation data for this product please contact:

T: 1 (888) 4PTGLAB (1-888-478-4522) (toll free in USA), or 1(312) 455-8498 (outside USA)

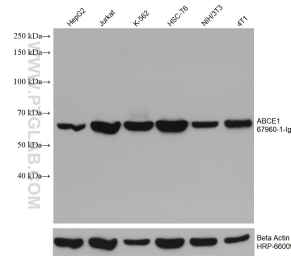
E: proteintech@ptglab.com
W: ptglab.com

This product is exclusively available under Proteintech Group brand and is not available to purchase from any other manufacturer.

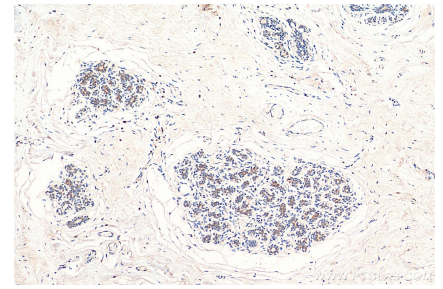
Données de validation sélectionnées



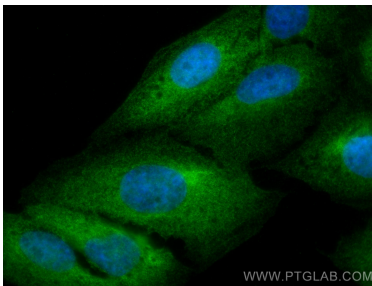
Various lysates were subjected to SDS PAGE followed by western blot with 67960-1-Ig (ABCE1 antibody) at dilution of 1:10000 incubated at room temperature for 1.5 hours.



Various lysates were subjected to SDS PAGE followed by western blot with 67960-1-Ig (ABCE1 antibody) at dilution of 1:10000 incubated at room temperature for 1.5 hours. The membrane was stripped and reblotted with HRP-conjugated Beta Actin Monoclonal antibody (HRP-66009) as loading control.



Immunohistochemical analysis of paraffin-embedded human breast cancer tissue slide using 67960-1-Ig (ABCE1 antibody) at dilution of 1:1000 (under 10x lens). Heat mediated antigen retrieval with Tris-EDTA buffer (pH 9.0).



Immunofluorescent analysis of (4% PFA) fixed U2OS cells using ABCE1 antibody (67960-1-Ig, Clone: 1B7E8) at dilution of 1:400 and CoraLite®488-Conjugated AffiniPure Goat Anti-Mouse IgG(H+L).