

À des fins de recherche uniquement

# Anticorps Monoclonal anti-CCT6B

Numéro de catalogue: 67961-1-Ig



## Informations de base

Numéro de catalogue: 67961-1-Ig	Numéro d'acquisition GenBank: BC027591	Méthode de purification: Purification par protéine G
Taille: 150ul , Concentration: 1000 µg/ml by Nanodrop;	Identification du gène (NCBI): 10693	CloneNo.: 2F11A9
Hôte: Mouse	Nom complet: chaperonin containing TCP1, subunit 6B (zeta 2)	Dilutions recommandées: WB 1:2000-1:10000 IHC 1:50-1:500 IF 1:400-1:1600
Isotype: IgG1	MW calculé 530 aa, 58 kDa	
Immunogen Catalog Number: AG31295	MW observés: 53-58 kDa	

## Applications

Applications testées:  
FC, IF, IHC, WB, ELISA

Spécificité de l'espèce:  
Humain, rat, souris

**Remarque-IHC: il est suggéré de démasquer l'antigène avec un tampon de TE buffer pH 9,0; (\*) À défaut, 'le démasquage de l'antigène peut être 'effectué avec un tampon citrate pH 6,0.**

Contrôles positifs:

WB : cellules Jurkat, cellules HEK-293, cellules HSC-T6, cellules K-562, cellules NIH/3T3

IHC : tissu testiculaire de souris,

IF : cellules U2OS,

## Informations générales

CCT6B, also named as CCT-zeta-2, TCP-1-zeta-like, CCT-zeta-like, Testis-specific Tcp20 and Testis-specific protein TSA303, belongs to the TCP-1 chaperonin family. CCT6B is a molecular chaperone which assists the folding of proteins upon ATP hydrolysis. It is known to play a role, in vitro, in the folding of actin and tubulin. CCT6B has 3 isoforms with the molecular mass of 53-58 kDa.

## Stockage

Stockage:

Stocker à -20°C. Stable pendant un an après l'expédition.

Tampon de stockage:

PBS avec azoture de sodium à 0,02 % et glycérol à 50 % pH 7,3

L'aliquotage n'est pas nécessaire pour le stockage à -20C

\*\*\* Les 20ul contiennent 0,1% de BSA.

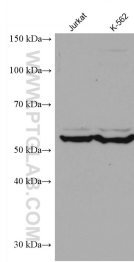
For technical support and original validation data for this product please contact:

T: 1 (888) 4PTGLAB (1-888-478-4522) (toll free in USA), or 1(312) 455-8498 (outside USA)

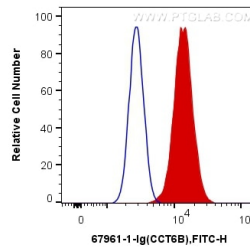
E: proteintech@ptglab.com  
W: ptglab.com

This product is exclusively available under Proteintech Group brand and is not available to purchase from any other manufacturer.

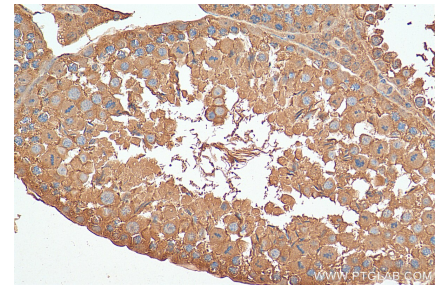
## Données de validation sélectionnées



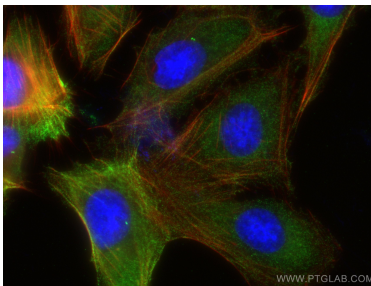
Various lysates were subjected to SDS PAGE followed by western blot with 67961-1-Ig (CCT6B antibody) at dilution of 1:5000 incubated at room temperature for 1.5 hours.



$1 \times 10^6$  U2OS cells were intracellularly stained with 0.4  $\mu$ g Anti-Human CCT6B (67961-1-Ig, Clone:2F11A9) and CoraLite®488-Conjugated AffiniPure Goat Anti-Mouse IgG(H+L) at dilution 1:1000 (red), or 0.4  $\mu$ g Control Antibody. Cells were fixed with 4% PFA and permeabilized with Flow Cytometry Perm Buffer (PF00011-C).



Immunohistochemical analysis of paraffin-embedded mouse testis tissue slide using 67961-1-Ig (CCT6B antibody) at dilution of 1:200 (under 40x lens). Heat mediated antigen retrieval with Tris-EDTA buffer (pH 9.0).



Immunofluorescent analysis of (-20°C Ethanol) fixed U2OS cells using CCT6B antibody (67961-1-Ig, Clone: 2F11A9) at dilution of 1:800 and CoraLite®488-Conjugated AffiniPure Goat Anti-Mouse IgG(H+L), CL594-Phalloidin (red).