

À des fins de recherche uniquement

Anticorps Monoclonal anti-MFSD2

Numéro de catalogue: 67965-1-Ig



Informations de base

Numéro de catalogue: 67965-1-Ig	Numéro d'acquisition GenBank: BC092414	Méthode de purification: Purification par protéine A
Taille: 150ul, Concentration: 1000 µg/ml by Nanodrop;	Identification du gène (NCBI): 84879	CloneNo.: 2D2B4
Hôte: Mouse	Nom complet: major facilitator superfamily domain containing 2	Dilutions recommandées: WB 1:5000-1:50000 IF 1:200-1:800
Isotype: IgG2a	MW calculé 543 aa, 60 kDa	
Immunogen Catalog Number: AG31028	MW observés: 60 kDa	

Applications

Applications testées:
IF, WB, ELISA

Spécificité de l'espèce:
Humain, souris

Contrôles positifs:

WB : tissu placentaire humain, tissu testiculaire
humain

IF : tissu cérébral de souris,

Informations générales

MFSD2, also named as MFSD2A, belongs to a large family of presumptive carbohydrate transporters with 10-12 membrane-spanning domains, is located at chromosomal position 1p34.2, and is conserved in evolution. It plays a role in thermogenesis via beta-adrenergic signaling pathway. It may be the main plasma membrane tunicamycin transporter. MFSD2 has three isoforms with MW 50 kDa and 59-60 kDa.

Stockage

Stockage:
Stocker à -20°C. Stable pendant un an après l'expédition.

Tampon de stockage:
PBS avec azotate de sodium à 0,02 % et glycérol à 50 % pH 7,3

L'aliquotage n'est pas nécessaire pour le stockage à -20C

*** Les 20ul contiennent 0,1% de BSA.

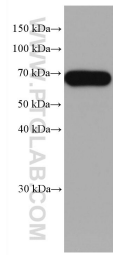
For technical support and original validation data for this product please contact:

T: 1 (888) 4PTGLAB (1-888-478-4522) (toll free
in USA), or 1(312) 455-8498 (outside USA)

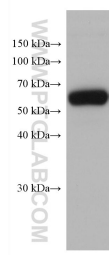
E: proteintech@ptglab.com
W: ptglab.com

This product is exclusively available under Proteintech Group brand and is not available to purchase from any other manufacturer.

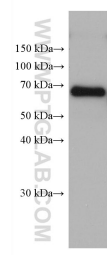
Données de validation sélectionnées



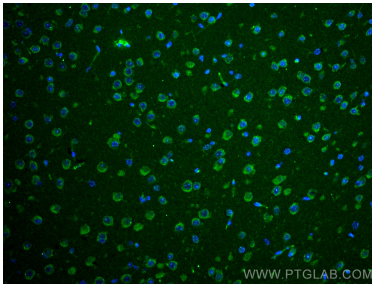
human testis tissue were subjected to SDS PAGE followed by western blot with 67965-1-Ig (MFSD2 antibody) at dilution of 1:5200 incubated at room temperature for 1.5 hours.



human testis tissue were subjected to SDS PAGE followed by western blot with 67965-1-Ig (MFSD2 antibody) at dilution of 1:10000 incubated at room temperature for 1.5 hours.



human placenta tissue were subjected to SDS PAGE followed by western blot with 67965-1-Ig (MFSD2 antibody) at dilution of 1:10000 incubated at room temperature for 1.5 hours.



Immunofluorescent analysis of (4% PFA) fixed mouse brain tissue using MFSD2 antibody (67965-1-Ig, Clone: 2D2B4) at dilution of 1:400 and CoraLite®488-Conjugated AffiniPure Goat Anti-Mouse IgG(H+L).