

À des fins de recherche uniquement

Anticorps Monoclonal anti-LIMK1

Numéro de catalogue: 67974-1-Ig **Phare**



Informations de base

Numéro de catalogue: 67974-1-Ig	Numéro d'acquisition GenBank: BC152982	Méthode de purification: Purification par protéine A
Taille: 150ul, Concentration: 1000 µg/ml by Nanodrop;	Identification du gène (NCBI): 3984	CloneNo.: 2B11E9
Hôte: Mouse	Nom complet: LIM domain kinase 1	Dilutions recommandées: WB 1:2000-1:10000 IF 1:500-1:2000
Isotype: IgG2a	MW calculé: 647 aa, 73 kDa	
Immunogen Catalog Number: AG28862	MW observés: 65 kDa	

Applications

Applications testées:
IF, WB, ELISA

Spécificité de l'espèce:
Humain, Lapin, rat, souris

Contrôles positifs:

WB : cellules HeLa, cellules A431, cellules HEK-293,
cellules MCF-7, cellules SH-SY5Y, tissu cérébral de
lapin, tissu cérébral de porc, tissu cérébral de rat, tissu
cérébral de souris

IF : cellules HeLa,

Informations générales

LIMK1, also named LIMK, belongs to the protein kinase superfamily and TKL Ser/Thr protein kinase family. LIMK1 is a protein kinase which regulates actin filament dynamics. Phosphorylates and inactivates the actin binding/depolymerizing factor cofilin, thereby stabilizing the actin cytoskeleton. Isoform 3 has a dominant negative effect on actin cytoskeletal changes. LIMK1 may be involved in brain development. The antibody has no cross-reaction with LIMK2.

Stockage

Stockage:
Stocker à -20°C. Stable pendant un an après l'expédition.
Tampon de stockage:
PBS avec azoture de sodium à 0,02 % et glycérol à 50 % pH 7,3
L'aliquotage n'est pas nécessaire pour le stockage à -20C

***** Les 20ul contiennent 0,1% de BSA.**

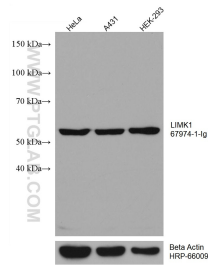
For technical support and original validation data for this product please contact:

T: 1 (888) 4PTGLAB (1-888-478-4522) (toll free
in USA), or 1(312) 455-8498 (outside USA)

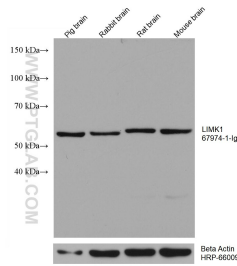
E: proteintech@ptglab.com
W: ptglab.com

This product is exclusively available under Proteintech Group brand and is not available to purchase from any other manufacturer.

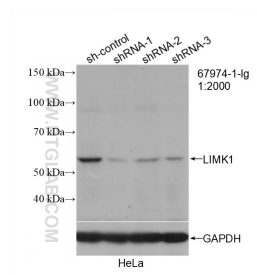
Données de validation sélectionnées



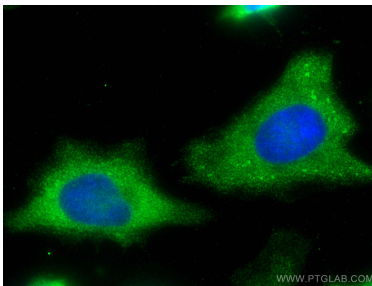
Various lysates were subjected to SDS PAGE followed by western blot with 67974-1-Ig (LIMK1 antibody) at dilution of 1:5000 incubated at room temperature for 1.5 hours. The membrane was stripped and reblotted with HRP-conjugated Beta Actin Monoclonal antibody (HRP-66009) as loading control.



Various lysates were subjected to SDS PAGE followed by western blot with 67974-1-Ig (LIMK1 antibody) at dilution of 1:5000 incubated at room temperature for 1.5 hours. The membrane was stripped and reblotted with HRP-conjugated Beta Actin Monoclonal antibody (HRP-66009) as loading control.



WB result of LIMK1 antibody (67974-1-Ig; 1:2000; incubated at room temperature for 1.5 hours) with sh-Control and sh-LIMK1 transfected HeLa cells.



Immunofluorescent analysis of (-20°C Methanol) fixed HeLa cells using LIMK1 antibody (67974-1-Ig, Clone: 2B11E9) at dilution of 1:1000 and CoraLite®488-Conjugated AffiniPure Goat Anti-Mouse IgG(H+L).