

À des fins de recherche uniquement

Anticorps Monoclonal anti-ARHGEF16



Numéro de catalogue: 67975-1-Ig

Informations de base

| | | |
|--|--|---|
| Numéro de catalogue: 67975-1-Ig | Numéro d'acquisition GenBank: BC002681 | Méthode de purification: Purification par protéine A |
| Taille: 150ul , Concentration: 1000 µg/ml by Nanodrop; | Identification du gène (NCBI): 27237 | CloneNo.: 1D8E3 |
| Hôte: Mouse | Nom complet: Rho guanine exchange factor (GEF) 16 | Dilutions recommandées: WB 1:5000-1:50000 IF 1:400-1:1600 |
| Isotype: IgG2b | MW calculé 80 kDa | |
| Immunogen Catalog Number: AG28675 | MW observés: 80 kDa | |

Applications

Applications testées:
IF, WB, ELISA

Spécificité de l'espèce:
Humain

Contrôles positifs:

WB : cellules A549, cellules HEK-293, cellules HeLa,
cellules HepG2, cellules MCF-7

IF : cellules MCF-7,

Informations générales

Small GTPases of the Rho family are critical regulators of various cellular functions including actin cytoskeleton organization, activation of kinase cascades, mitogenesis, transcriptional activation and stimulation of DNA synthesis. Rho proteins cycle between a biologically active GTP-bound state and an inactive GDP-bound state. Rho guanine nucleotide exchange factor (GEF) has a crucial role in activating small GTPase by exchange GDP for GTP. ARGEF16 is one of the multiple GEF members. Although the specific function of this protein is not known yet, it is thought to be involved in protein-protein and protein-lipid interactions.

Stockage

Stockage:
Stocker à -20 °C.

Tampon de stockage:
PBS avec azoture de sodium à 0,02 % et glycérol à 50 % pH 7,3

L'aliquotage n'est pas nécessaire pour le stockage à -20C

*** Les 20ul contiennent 0,1% de BSA.

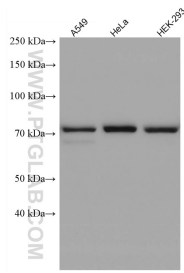
For technical support and original validation data for this product please contact:

T: 1 (888) 4PTGLAB (1-888-478-4522) (toll free
in USA), or 1(312) 455-8498 (outside USA)

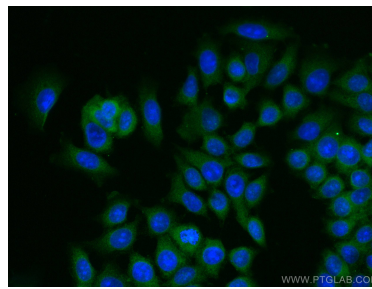
E: proteintech@ptglab.com
W: ptglab.com

This product is exclusively available under Proteintech Group brand and is not available to purchase from any other manufacturer.

Données de validation sélectionnées



Various lysates were subjected to SDS PAGE followed by western blot with 67975-1-Ig (ARHGEF16 antibody) at dilution of 1:10000 incubated at room temperature for 1.5 hours.



Immunofluorescent analysis of (-20°C Methanol) fixed MCF-7 cells using ARHGEF16 antibody (67975-1-Ig, Clone: 1D8E3) at dilution of 1:800 and CoraLite®488-Conjugated AffiniPure Goat Anti-Mouse IgG(H+L).