

À des fins de recherche uniquement

# Anticorps Monoclonal anti-RNASEH2A



Numéro de catalogue: 67976-1-Ig

## Informations de base

Numéro de catalogue: 67976-1-Ig	Numéro d'acquisition GenBank: BC011748	Méthode de purification: Purification par protéine A
Taille: 150ul , Concentration: 1000 µg/ml by Nanodrop;	Identification du gène (NCBI): 10535	CloneNo.: 1A2E8
Hôte: Mouse	Nom complet: ribonuclease H2, subunit A	Dilutions recommandées: WB 1:2000-1:10000
Isotype: IgG2a	MW calculé 299 aa, 33 kDa	
Immunogen Catalog Number: AG9256		

## Applications

Applications testées:  
WB, ELISA  
Spécificité de l'espèce:  
Humain

Contrôles positifs:

WB : cellules LNCaP, cellules HEK-293, cellules HeLa, cellules Jurkat, cellules K-562, cellules MCF-7

## Informations générales

RNASEH2A (Ribonuclease H2 subunit A) is also named as RNASEHI, RNHIA and belongs to the RNase HII family and Eukaryotic subfamily. It is involved in the removal of the initiator RNA primers of Okazaki fragments, an essential step during chromosomal DNA replication of the lagging strand (PMID:9482870). It is an endonuclease that specifically degrades the RNA of RNA:DNA hybrids. Defects in RNASEH2A are the cause of Aicardi-Goutieres syndrome type 4 (AGS4).

## Stockage

Stockage:  
Stocker à -20 °C  
Tampon de stockage:  
PBS avec azoture de sodium à 0,02 % et glycérol à 50 % pH 7,3  
L'aliquotage n'est pas nécessaire pour le stockage à -20C

**\*\*\* Les 20ul contiennent 0,1% de BSA.**

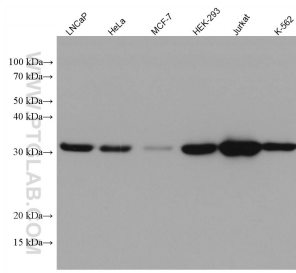
For technical support and original validation data for this product please contact:

T: 1 (888) 4PTGLAB (1-888-478-4522) (toll free  
in USA), or 1(312) 455-8498 (outside USA)

E: [proteintech@ptglab.com](mailto:proteintech@ptglab.com)  
W: [ptglab.com](http://ptglab.com)

**This product is exclusively available under Proteintech Group brand and is not available to purchase from any other manufacturer.**

## Données de validation sélectionnées



Various lysates were subjected to SDS PAGE followed by western blot with 67976-1-Ig (RNASEH2A antibody) at dilution of 1:5000 incubated at room temperature for 1.5 hours.