

À des fins de recherche uniquement

# Anticorps Monoclonal anti-MON1B

Numéro de catalogue: 67985-1-Ig **Phare**



## Informations de base

<b>Numéro de catalogue:</b> 67985-1-Ig	<b>Numéro d'acquisition GenBank:</b> BC024277	<b>Méthode de purification:</b> Purification par protéine A
<b>Taille:</b> 150ul , Concentration: 1000 µg/ml by Nanodrop;	<b>Identification du gène (NCBI):</b> 22879	<b>CloneNo.:</b> 3E7C6
<b>Hôte:</b> Mouse	<b>Nom complet:</b> MON1 homolog B (yeast)	<b>Dilutions recommandées:</b> WB 1:2000-1:10000 IF 1:200-1:800
<b>Isotype:</b> IgG2b	<b>MW calculé:</b> 547 aa, 59 kDa	
<b>Immunogen Catalog Number:</b> AG9920	<b>MW observés:</b> 59 kDa	

## Applications

<b>Applications testées:</b> IF, WB, ELISA	<b>Contrôles positifs:</b>
<b>Spécificité de l'espèce:</b> Humain	<b>WB :</b> cellules LNCaP, cellules A549, cellules HEK-293, cellules HeLa, cellules HepG2, cellules Jurkat, cellules K-562, cellules MCF-7, cellules SW480
	<b>IF :</b> cellules HeLa,

## Informations générales

Vacuolar fusion protein MON1 homolog B (MON1B) is also named as HSRG1, KIAA0872 and SAND2, and belongs to the MON1/SAND family. The membrane recruitment of MON1B, a homolog of yeast MON1 protein in mammals, is essential for vesicular fusion of early endosomes (PMID:26987402).

## Stockage

**Stockage:**  
Stocker à -20°C. Stable pendant un an après l'expédition.  
**Tampon de stockage:**  
PBS avec azoture de sodium à 0,02 % et glycérol à 50 % pH 7,3  
L'aliquotage n'est pas nécessaire pour le stockage à -20C

\*\*\* Les 20ul contiennent 0,1% de BSA.

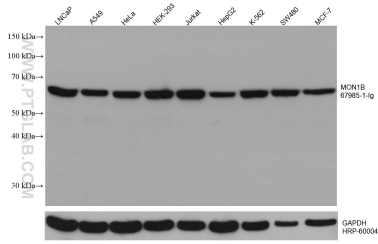
For technical support and original validation data for this product please contact:

T: 1 (888) 4PTGLAB (1-888-478-4522) (toll free in USA), or 1(312) 455-8498 (outside USA)

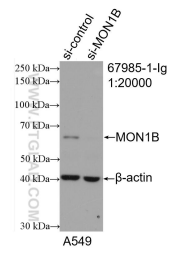
E: [proteintech@ptglab.com](mailto:proteintech@ptglab.com)  
W: [ptglab.com](http://ptglab.com)

This product is exclusively available under Proteintech Group brand and is not available to purchase from any other manufacturer.

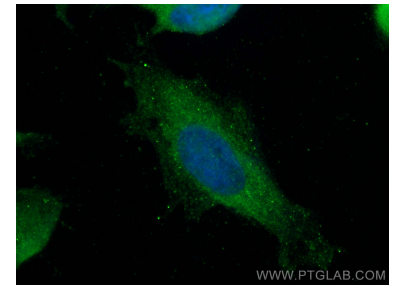
## Données de validation sélectionnées



Various lysates were subjected to SDS PAGE followed by western blot with 67985-1-Ig (MON1B antibody) at dilution of 1:5000 incubated at room temperature for 1.5 hours. The membrane was stripped and reblotted with HRP-conjugated GAPDH Monoclonal antibody (HRP-60004) as loading control.



WB result of MON1B antibody (67985-1-Ig: 1:20000; incubated at room temperature for 1.5 hours) with sh-Control and sh-MON1B transfected A549 cells.



Immunofluorescent analysis of (-20°C Methanol) fixed HeLa cells using MON1B antibody (67985-1-Ig, Clone: 3E7C6) at dilution of 1:400 and CoraLite@488-Conjugated AffiniPure Goat Anti-Mouse IgG(H+L).