

À des fins de recherche uniquement

Anticorps Monoclonal anti-Alpha B Crystallin



Numéro de catalogue: 68001-1-Ig

Informations de base

Numéro de catalogue: 68001-1-Ig	Numéro d'acquisition GenBank: BC007008	Méthode de purification: Purification par protéine A
Taille: 150ul , Concentration: 1000 µg/ml by Nanodrop;	Identification du gène (NCBI): 1410	CloneNo.: 1B4C3
Hôte: Mouse	Nom complet: crystallin, alpha B	Dilutions recommandées: WB 1:5000-1:50000 IHC 1:1000-1:4000
Isotype: IgG2b	MW calculé: 175 aa, 20 kDa	
Immunogen Catalog Number: AG8656	MW observés: 20-22 kDa	

Applications

Applications testées:

IHC, WB, ELISA

Spécificité de l'espèce:

Humain, rat, souris

Contrôles positifs:

WB : tissu oculaire de souris, tissu oculaire de rat

IHC : tissu oculaire de souris,

Remarque-IHC: il est suggéré de démasquer l'antigène avec un tampon de TE buffer pH 9.0; (*) À défaut, 'le démasquage de l'antigène peut être effectué avec un tampon citrate pH 6,0.

Informations générales

Alpha B-crystallin, encoded by CRYAB gene, is multifunctional, serving as both a major structural protein in the lens and a small heat-shock protein in other tissues in mammals. Alpha B-crystallin may contribute to the transparency and refractive index of the lens. Single nucleotide polymorphisms (SNPs) in the promoter region of CRYAB gene have been associated with in multiple sclerosis. Mutations in the CRYAB gene cause distinct clinical phenotypes including isolated posterior polar cataract, myofibrillar myopathy, cardiomyopathy, or a multisystemic disorder combining all these features. Impairment of alpha-B crystallin dimerization may be relevant to the pathogenesis of these disorders.

Stockage

Stockage:

Stocker à -20 °C.

Tampon de stockage:

PBS avec azoture de sodium à 0,02 % et glycérol à 50 % pH 7,3

L'aliquotage n'est pas nécessaire pour le stockage à -20C

***** Les 20ul contiennent 0,1% de BSA.**

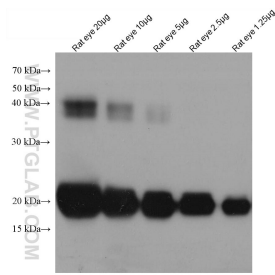
For technical support and original validation data for this product please contact:

T: 1 (888) 4PTGLAB (1-888-478-4522) (toll free
in USA), or 1(312) 455-8498 (outside USA)

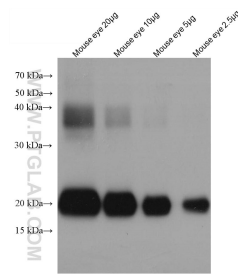
E: proteintech@ptglab.com
W: ptglab.com

This product is exclusively available under Proteintech Group brand and is not available to purchase from any other manufacturer.

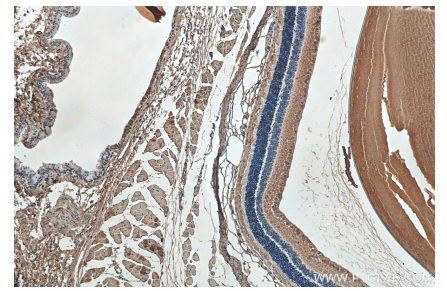
Données de validation sélectionnées



rat eye tissue were subjected to SDS PAGE followed by western blot with 68001-1-Ig (aB-Crystallin antibody) at dilution of 1:20000 incubated at room temperature for 1.5 hours.



mouse eye tissue were subjected to SDS PAGE followed by western blot with 68001-1-Ig (aB-Crystallin antibody) at dilution of 1:20000 incubated at room temperature for 1.5 hours.



Immunohistochemical analysis of paraffin-embedded mouse eye tissue slide using 68001-1-Ig (Alpha B Crystallin antibody) at dilution of 1:2000 (under 10x lens). Heat mediated antigen retrieval with Tris-EDTA buffer (pH 9.0).