

À des fins de recherche uniquement

# Anticorps Monoclonal anti-RALY

Numéro de catalogue: 68011-1-Ig



## Informations de base

Numéro de catalogue: 68011-1-Ig	Numéro d'acquisition GenBank: BC103753	Méthode de purification: Purification par protéine G
Taille: 150ul, Concentration: 1000 µg/ml by Nanodrop;	Identification du gène (NCBI): 22913	CloneNo.: 2B10C3
Hôte: Mouse	Nom complet: RNA binding protein, autoantigenic (hnRNP-associated with lethal yellow homolog (mouse))	Dilutions recommandées: WB 1:5000-1:50000 IHC 1:1000-1:4000 IF 1:200-1:800
Isotype: IgG1	MW calculé 307 aa, 33 kDa	
Immunogen Catalog Number: AG12250	MW observés: 30-37 kDa	

## Applications

Applications testées:  
FC, IF, IHC, WB, ELISA

Spécificité de l'espèce:  
Humain

**Remarque-IHC: il est suggéré de démasquer l'antigène avec un tampon de TE buffer pH 9.0; (\*) À défaut, le démasquage de l'antigène peut être effectué avec un tampon citrate pH 6,0.**

Contrôles positifs:

WB : cellules LNCaP, cellules HeLa, cellules HepG2, cellules Jurkat, cellules K-562

IHC : tissu de cancer de l'estomac humain,

IF : cellules A431,

## Informations générales

RNA-binding protein RALY is a protein that in humans is encoded by the RALY gene. In infectious mononucleosis, anti-EBNA-1 antibodies are produced which cross-react with multiple normal human proteins. The cross-reactivity is due to anti-gly/ala antibodies that cross-react with host proteins containing configurations like those in the EBNA-1 repeat. One such antigen is RALY which is a member of the heterogeneous nuclear ribonucleoprotein gene family.

## Stockage

Stockage:

Stocker à -20°C. Stable pendant un an après l'expédition.

Tampon de stockage:

PBS avec azoture de sodium à 0,02 % et glycérol à 50 % pH 7,3

L'aliquotage n'est pas nécessaire pour le stockage à -20C

\*\*\* Les 20ul contiennent 0,1% de BSA.

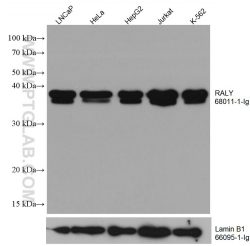
For technical support and original validation data for this product please contact:

T: 1 (888) 4PTGLAB (1-888-478-4522) (toll free in USA), or 1(312) 455-8498 (outside USA)

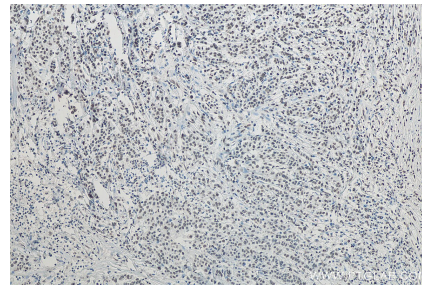
E: [proteintech@ptglab.com](mailto:proteintech@ptglab.com)  
W: [ptglab.com](http://ptglab.com)

This product is exclusively available under Proteintech Group brand and is not available to purchase from any other manufacturer.

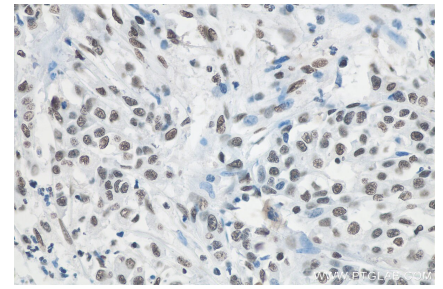
## Données de validation sélectionnées



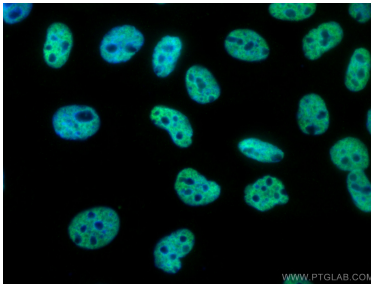
LNCaP cells were subjected to SDS PAGE followed by western blot with 68011-1-Ig (RALY antibody) at dilution of 1:20000 incubated at room temperature for 1.5 hours. The membrane was stripped and reblotted with Lamin B1 Monoclonal antibody (66095-1-Ig) as loading control.



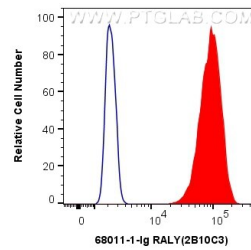
Immunohistochemical analysis of paraffin-embedded human stomach cancer tissue slide using 68011-1-Ig (RALY antibody) at dilution of 1:2000 (under 10x lens). Heat mediated antigen retrieval with Tris-EDTA buffer (pH 9.0).



Immunohistochemical analysis of paraffin-embedded human stomach cancer tissue slide using 68011-1-Ig (RALY antibody) at dilution of 1:2000 (under 40x lens). Heat mediated antigen retrieval with Tris-EDTA buffer (pH 9.0).



Immunofluorescent analysis of (4% PFA) fixed A431 cells using RALY antibody (68011-1-Ig, Clone: 2B10C3) at dilution of 1:400 and CoraLite®488-Conjugated AffiniPure Goat Anti-Mouse IgG(H+L).



1X10<sup>6</sup> A431 cells were intracellularly stained with 0.4 ug Anti-Human RALY (68011-1-Ig, Clone:2B10C3) and CoraLite®488-Conjugated AffiniPure Goat Anti-Mouse IgG(H+L) at dilution 1:1000 (red), or 0.4 ug Mouse IgG1 Isotype Control (MOPC-21) (65124-1-Ig, Clone: MOPC-21) (blue). Cells were fixed and permeabilized with Transcription Factor Staining Buffer Kit (PF00011).