

À des fins de recherche uniquement

Anticorps Monoclonal anti-AGT

Numéro de catalogue: 68020-1-Ig



Informations de base

Numéro de catalogue: 68020-1-Ig	Numéro d'acquisition GenBank: BC011519	Méthode de purification: Purification par protéine A
Taille: 150ul , Concentration: 500 µg/ml by Nanodrop;	Identification du gène (NCBI): 183	CloneNo.: 1B2F5
Hôte: Mouse	Nom complet: angiotensinogen (serpin peptidase inhibitor, clade A, member 8)	Dilutions recommandées: WB 1:5000-1:20000 IHC 1:500-1:2000 IF 1:200-1:800
Isotype: IgG2b	MW calculé 485 aa, 53 kDa	
Immunogen Catalog Number: AG16658	MW observés: 52 kDa	

Applications

Applications testées:

IF, IHC, WB, ELISA

Spécificité de l'espèce:

Humain, porc

Remarque-IHC: il est suggéré de démasquer l'antigène avec un tampon de TE buffer pH 9,0; (*) À défaut, 'le démasquage de l'antigène peut être effectué avec un tampon citrate pH 6,0.

Contrôles positifs:

WB : plasma humain, cellules HuH-7, cellules THP-1, plasma de porc, tissu placentaire humain

IHC : tissu rénal humain, tissu hépatique humain

IF : cellules HepG2,

Informations générales

Angiotensinogen is a precursor of angiotensin II (Ang II), is expressed and synthesized largely in the liver and is cleaved by the enzyme renin in response to lowered blood pressure. It has a key role in mediating vascular constriction and regulating salt and fluid homeostasis. The resulting product, angiotensin I, is then cleaved by angiotensin converting enzyme (ACE) to generate the physiologically active enzyme angiotensin II. Mutations in this gene are associated with susceptibility to essential hypertension, and can cause renal tubular dysgenesis, a severe disorder of renal tubular development. Defects in this gene also have been associated with non-familial structural atrial fibrillation, and inflammatory bowel disease.

Stockage

Stockage:

Stocker à -20 °C.

Tampon de stockage:

PBS avec azoture de sodium à 0,02 % et glycérol à 50 % pH 7,3

L'aliquotage n'est pas nécessaire pour le stockage à -20C

*** Les 20ul contiennent 0,1% de BSA.

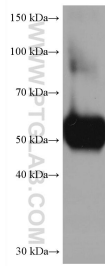
For technical support and original validation data for this product please contact:

T: 1 (888) 4PTGLAB (1-888-478-4522) (toll free in USA), or 1(312) 455-8498 (outside USA)

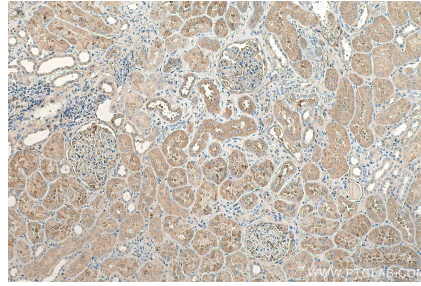
E: proteintech@ptglab.com
W: ptglab.com

This product is exclusively available under Proteintech Group brand and is not available to purchase from any other manufacturer.

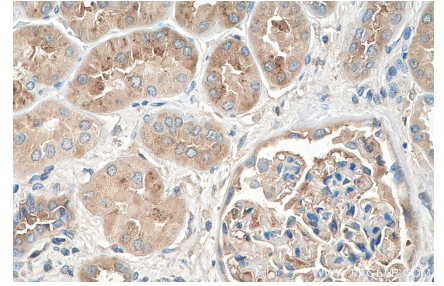
Données de validation sélectionnées



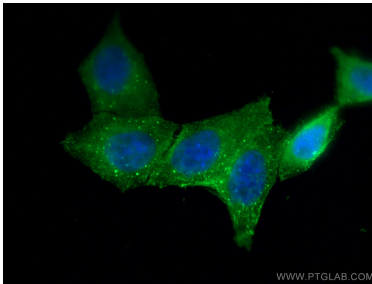
human plasma were subjected to SDS PAGE followed by western blot with 68020-1-Ig (AGT antibody) at dilution of 1:10000 incubated at room temperature for 1.5 hours.



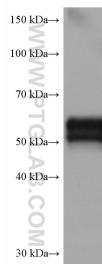
Immunohistochemical analysis of paraffin-embedded human kidney tissue slide using 68020-1-Ig (AGT antibody) at dilution of 1:1000 (under 10x lens). Heat mediated antigen retrieval with Tris-EDTA buffer (pH 9.0).



Immunohistochemical analysis of paraffin-embedded human kidney tissue slide using 68020-1-Ig (AGT antibody) at dilution of 1:1000 (under 40x lens). Heat mediated antigen retrieval with Tris-EDTA buffer (pH 9.0).



Immunofluorescent analysis of (4% PFA) fixed HepG2 cells using AGT antibody (68020-1-Ig, Clone: 1B2F5) at dilution of 1:400 and CoraLite®488-Conjugated AffiniPure Goat Anti-Mouse IgG(H+L).



human placenta tissue were subjected to SDS PAGE followed by western blot with 68020-1-Ig (AGT antibody) at dilution of 1:10000 incubated at room temperature for 1.5 hours.