

À des fins de recherche uniquement

# Anticorps Monoclonal anti-SFXN1

Numéro de catalogue: 68024-1-Ig



## Informations de base

Numéro de catalogue: 68024-1-Ig	Numéro d'acquisition GenBank: BC020517	Méthode de purification: Purification par protéine G
Taille: 150ul, Concentration: 1000 µg/ml by Nanodrop;	Identification du gène (NCBI): 94081	CloneNo.: 2D9F1
Hôte: Mouse	Nom complet: sideroflexin 1	Dilutions recommandées: WB 1:5000-1:50000 IF 1:200-1:800
Isotype: IgG1	MW calculé 35.6 kDa	
Immunogen Catalog Number: AG2985	MW observés: 32 kDa	

## Applications

Applications testées:  
IF, WB, ELISA

Spécificité de l'espèce:  
Humain, rat, souris

Contrôles positifs:

WB : cellules PC-3, cellules HeLa, cellules HepG2,  
cellules Jurkat, cellules LNCaP, cellules MCF-7,  
cellules MOLT-4, cerveau de rat, cerveau de souris

IF : cellules MCF-7,

## Informations générales

SFXN1, the founding member of the SLC56 family, was identified by positional cloning of the mutation in the flexed-tail mouse model with sideroblastic anemia. SFXN1 was recently identified as a mitochondrial serine transporter essential for one-carbon (1C) metabolism, a process in which folate species are generated and used in biosynthetic pathways required for cell proliferation. In HEK293 cells, SFXN1 is the most abundant isoform among the SFXNs.

## Stockage

Stockage:

Stocker à -20°C. Stable pendant un an après l'expédition.

Tampon de stockage:

PBS avec azoture de sodium à 0,02 % et glycérol à 50 % pH 7,3

L'aliquotage n'est pas nécessaire pour le stockage à -20C

\*\*\* Les 20ul contiennent 0,1% de BSA.

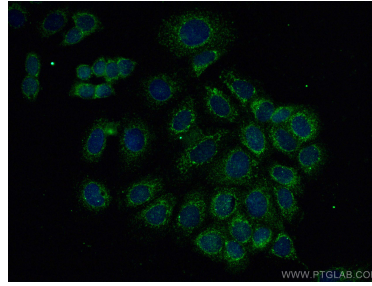
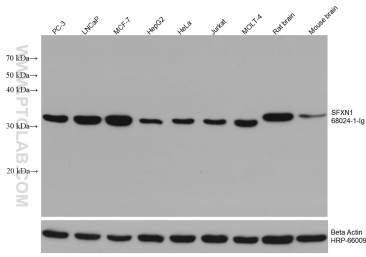
For technical support and original validation data for this product please contact:

T: 1 (888) 4PTGLAB (1-888-478-4522) (toll free  
in USA), or 1(312) 455-8498 (outside USA)

E: [proteintech@ptglab.com](mailto:proteintech@ptglab.com)  
W: [ptglab.com](http://ptglab.com)

This product is exclusively available under Proteintech Group brand and is not available to purchase from any other manufacturer.

## Données de validation sélectionnées



Various lysates were subjected to SDS PAGE followed by western blot with 68024-1-Ig (SFXN1 antibody) at dilution of 1:10000 incubated at room temperature for 1.5 hours. The membrane was stripped and reblotted with HRP-conjugated Beta Actin Monoclonal antibody (HRP-66009) as loading control.

Immunofluorescent analysis of (-20°C Methanol) fixed MCF-7 cells using SFXN1 antibody (68024-1-Ig, Clone: 2D9F1) at dilution of 1:400 and CoraLite®488-Conjugated AffiniPure Goat Anti-Mouse IgG(H+L).