

À des fins de recherche uniquement

# Anticorps Monoclonal anti-DUSP22

Numéro de catalogue: 68032-1-Ig



## Informations de base

Numéro de catalogue: 68032-1-Ig	Numéro d'acquisition GenBank: BC022847	Méthode de purification: Purification par protéine A
Taille: 150ul, Concentration: 1000 µg/ml by Nanodrop;	Identification du gène (NCBI): 56940	CloneNo.: 3B8F1
Hôte: Mouse	Nom complet: dual specificity phosphatase 22	Dilutions recommandées: WB 1:2000-1:10000 IF 1:400-1:1600
Isotype: IgG2a	MW calculé: 184 aa, 21 kDa	
Immunogen Catalog Number: AG9831	MW observés: 21 kDa	

## Applications

Applications testées:  
IF, WB, ELISA

Spécificité de l'espèce:  
Humain, Lapin, rat, souris

### Contrôles positifs:

WB : tissu cérébral de rat, tissu cérébral de lapin, tissu  
cérébral de souris

IF : cellules NIH/3T3,

## Informations générales

DUSP22(Dual specificity protein phosphatase 22) is also named as JSP1, LMWDSP2, MKPX. It has been demonstrated to belong to a new subgroup of small DSPs anchored at the membranes by an N-terminal myristic acid moiety and DUSP22 play a regulatory role in the JNK or p38 MAPK pathways(PMID:17384676). It has 2 isoforms produced by alternative splicing with the molecular weight of 21 kDa and 23 kDa.

## Stockage

Stockage:  
Stocker à -20 °C.

Tampon de stockage:  
PBS avec azoture de sodium à 0,02 % et glycérol à 50 % pH 7,3

L'aliquotage n'est pas nécessaire pour le stockage à -20C

\*\*\* Les 20ul contiennent 0,1% de BSA.

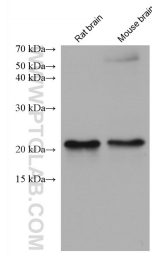
For technical support and original validation data for this product please contact:

T: 1 (888) 4PTGLAB (1-888-478-4522) (toll free  
in USA), or 1(312) 455-8498 (outside USA)

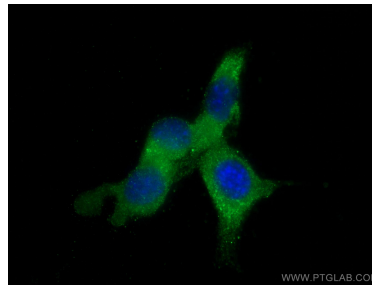
E: [proteintech@ptglab.com](mailto:proteintech@ptglab.com)  
W: [ptglab.com](http://ptglab.com)

This product is exclusively available under Proteintech Group brand and is not available to purchase from any other manufacturer.

## Données de validation sélectionnées



Various lysates were subjected to SDS PAGE followed by western blot with 68032-1-Ig (DUSP22 antibody) at dilution of 1:5000 incubated at room temperature for 1.5 hours.



Immunofluorescent analysis of (-20°C Methanol) fixed NIH/3T3 cells using DUSP22 antibody (68032-1-Ig, Clone: 3B8F1) at dilution of 1:800 and CoraLite®488-Conjugated AffiniPure Goat Anti-Mouse IgG(H+L).