

À des fins de recherche uniquement

Anticorps Monoclonal anti-Phospho-RPS6KA1 (Thr359/Ser363)



Numéro de catalogue: 68041-1-Ig

Informations de base

Numéro de catalogue: 68041-1-Ig	Numéro d'acquisition GenBank: BC014966	Méthode de purification: Purification par protéine G
Taille: 100ul , Concentration: 1000 µg/ml by Nanodrop;	Identification du gène (NCBI): 6195	CloneNo.: 2C11D9
Hôte: Mouse	Nom complet: ribosomal protein S6 kinase, 90kDa, polypeptide 1	Dilutions recommandées: WB 1:5000-1:50000
Isotype: IgG1	MW calculé: 735 aa, 83 kDa	
	MW observés: 80 kDa	

Applications

Applications testées:
WB, ELISA

Spécificité de l'espèce:
Humain, souris

Contrôles positifs:

WB : cellules NIH/3T3, cellules HeLa, cellules HeLa traitées à la λ phosphatase, cellules NIH/3T3 traitées à la λ phosphatase

Informations générales

The 90 kDa ribosomal S6 kinases (RSK1-4) are a family of widely expressed serine/threonine kinases and play an important role in the MAPK signaling cascade and act downstream of ERK1/2 signaling. It can mediate mitogenic and stress-induced activation of the transcription factors CREB1, ETV1/ER81 and NR4A1/NUR77. RSK1 (RPS6KA1) is also designated as p90RSK associated with cellular proliferation, survival and differentiation. RPS6KA1 has some phosphorylation sites including Ser380, Thr359 and Ser363 which are important for kinase activation. (PMID: 16458888, 30813401, 17259979, 10679322)

Stockage

Stockage:
Stocker à -20 °C

Tampon de stockage:
PBS avec azoture de sodium à 0,02 % et glycérol à 50 % pH 7,3
L'aliquotage n'est pas nécessaire pour le stockage à -20C

*** Les 20ul contiennent 0,1% de BSA.

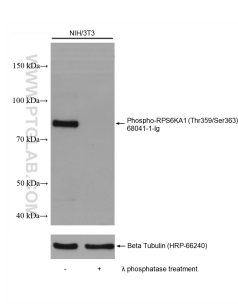
For technical support and original validation data for this product please contact:

T: 1 (888) 4PTGLAB (1-888-478-4522) (toll free in USA), or 1(312) 455-8498 (outside USA)

E: proteintech@ptglab.com
W: ptglab.com

This product is exclusively available under Proteintech Group brand and is not available to purchase from any other manufacturer.

Données de validation sélectionnées



Non-treated and λ phosphatase treated NIH/3T3 cells were subjected to SDS PAGE followed by western blot with 68041-1-Ig (Phospho-RPS6KA1 (Thr359/Ser363) antibody) at dilution of 1:20000 incubated at room temperature for 1.5 hours. The membrane was stripped and re-blotted with Beta-Tubulin (HRP-66240) as loading control.