

À des fins de recherche uniquement

# Anticorps Monoclonal anti-m6A

Numéro de catalogue: 68055-1-Ig **6 Publications**



## Informations de base

Numéro de catalogue: 68055-1-Ig	Numéro d'acquisition GenBank: m6A	Méthode de purification: Purification par protéine A
Taille: 150ul , Concentration: 1000 µg/ml by Nanodrop;	Identification du gène (NCBI): Nom complet:	CloneNo.: 1D5E10
Hôte: Mouse		Dilutions recommandées: RIP 1:1000-1:4000 IHC 1:2000-1:8000 ELISA 1:2000-1:20000 Dot Blot 1:1000-1:4000
Isotype: IgG3		

## Applications

**Applications testées:**  
Dot Blot, IHC, RIP, ELISA

**Demandes citées:**  
IF, IHC, RIP, WB

**Spécificité de l'espèce:**  
Humain, rat, souris, m6A

**Espèces citées:**  
Humain, souris

### Contrôles positifs:

RIP : RNA,  
IHC : tissu testiculaire de souris, tissu de cancer du  
côlon humain, tissu de cancer du poumon humain,  
tissu de cancer du sein humain

ELISA : m6A,  
Dot Blot : RNA,

**Remarque-IHC: il est suggéré de démasquer  
l'antigène avec un tampon de TE buffer pH  
9.0; (\*) À défaut, 'le démasquage de  
l'antigène peut être effectué avec un  
tampon citrate pH 6,0.**

## Informations générales

m6A (N6-methyladenosine) is the most abundant internal modification in mammalian mRNA. This modification is installed by the m6A methyltransferases or termed "writers" such as METTL3 and METTL14, and can be reversed by demethylases that serve as "erasers" such as FTO and ALKBH5. The stability of m6A-modified mRNA is regulated by m6A reader protein YTHDFs, which recognizes m6A and reduces the stability of target transcripts. m6A modification and its regulatory proteins play critical roles in cancer pathogenesis and progression. m6A modification is also involved in viruses life cycles, suggesting that drugs targets to m6A pathway could be used for antiviral therapy.

Protocol for Dot Blot:

<https://www.ptglab.com/protocol/68055-1-IgDotBlot.pdf>

## Publications notables

Autrice	Pubmed ID	Journal	Application
Lee J Martin	36359844	Cells	IHC
Meige Sun	36358640	Cancers (Basel)	
Shu Fang	35571033	Front Genet	

## Stockage

### Stockage:

Stocker à -20°C. Stable pendant un an après l'expédition.

### Tampon de stockage:

PBS avec azoture de sodium à 0,02 % et glycérol à 50 % pH 7,3

L'aliquotage n'est pas nécessaire pour le stockage à -20C

**\*\*\* Les 20ul contiennent 0,1% de BSA.**

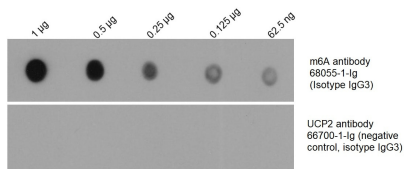
For technical support and original validation data for this product please contact:

T: 1 (888) 4PTGLAB (1-888-478-4522) (toll free  
in USA), or 1(312) 455-8498 (outside USA)

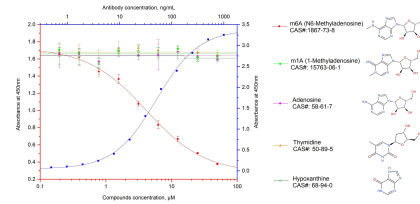
E: [proteintech@ptglab.com](mailto:proteintech@ptglab.com)  
W: [ptglab.com](http://ptglab.com)

**This product is exclusively available under Proteintech  
Group brand and is not available to purchase from any  
other manufacturer.**

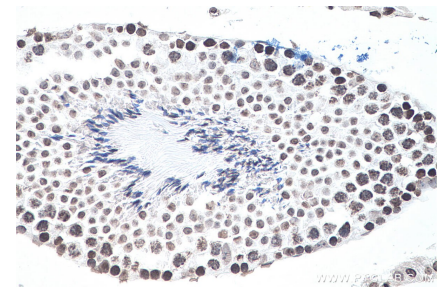
## Données de validation sélectionnées



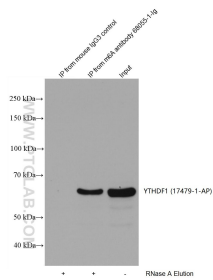
Total RNA was isolated from HEK-293 cell line and was dotted to NC membrane at different amount as indicated above the dots. The membrane was blocked with BSA and blotted with m6A antibody 68055-1-Ig at 1:2000 followed by incubation of HRP-goat anti-mouse secondary antibody. Signal was developed by ECL substrate. A parallel dot blot was performed using unrelated antibody with the same isotype (UCP2 antibody 66700-1-Ig) at the same dose.



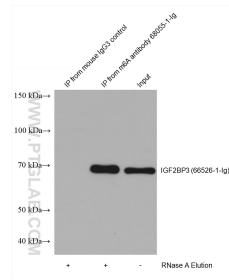
Indirect ELISA and competitive ELISA results show that this antibody is specific to m6A. Indirect ELISA was performed by coating BSA conjugated m6A at 20ng/well followed by blocking with 1% BSA. Serial diluted primary antibody was added to the plates and incubated at 37°C. HRP-goat anti-mouse was used for detection. Competitive ELISA was performed similarly except that different concentration of m6A or its structure analogue compounds are mixed in primary antibody



Immunohistochemical analysis of paraffin-embedded mouse testis tissue slide using 68055-1-Ig (m6A antibody) at dilution of 1:4000 (under 40x lens). Heat mediated antigen retrieval with Tris-EDTA buffer (pH 9.0).



HEK-293 cells were lysed and immunoprecipitated with Protein A-m6A antibody and Protein A-mouse IgG3 control antibody respectively in the presence of RNAase inhibitor cocktail. The immunoprecipitated complex was washed digested by RNAase A followed by western blot with YTHDF1(m6A reader) antibody 17479-1-AP (1:2000). (Lysate: 3.6mg per IP; IP: 15µg antibody and 50µL beads, 4 hours at 4°C; Digestion: 50µg/mL \* 80µL RNAase A for 1



HEK-293 cells were lysed and immunoprecipitated with Protein A-m6A antibody and Protein A-mouse IgG3 control antibody respectively in the presence of RNAase inhibitor cocktail. The immunoprecipitated complex was washed digested by RNAase A followed by western blot with IGF2BP3 (m6A reader) antibody 66526-1-Ig (1:2000). (Lysate: 4.0 mg per IP; IP: 30µg antibody and 50µL beads, 4 hours at 4°C; Digestion: 50µg/mL \* 80µL RNAase A for 1