

À des fins de recherche uniquement

# Anticorps Monoclonal anti-GEN1

Numéro de catalogue: 68060-1-Ig



## Informations de base

Numéro de catalogue: 68060-1-Ig	Numéro d'acquisition GenBank: NM_182625	Méthode de purification: Purification par protéine G
Taille: 150ul, Concentration: 1000 µg/ml by Nanodrop;	Identification du gène (NCBI): 348654	CloneNo.: 1A10D10
Hôte: Mouse	Nom complet: Gen homolog 1, endonuclease (Drosophila)	Dilutions recommandées: WB 1:1000-1:4000
Isotype: IgG1	MW calculé 103 kDa	
Immunogen Catalog Number: AG31247	MW observés: 98-100 kDa	

## Applications

Applications testées:  
WB, ELISA  
Spécificité de l'espèce:  
Humain

Contrôles positifs:

WB : cellules HEK-293, cellules A549, cellules Daudi,  
cellules K-562, cellules U2OS

## Informations générales

GEN1 is a endonuclease which resolves Holliday junctions (HJs) by the introduction of symmetrically related cuts across the junction point, to produce nicked duplex products in which the nicks can be readily ligated. GEN1 efficiently cleaves both single and double HJs contained within large recombination intermediates.

## Stockage

Stockage:  
Stocker à -20 °C.  
Tampon de stockage:  
PBS avec azoture de sodium à 0,02 % et glycérol à 50 % pH 7,3  
L'aliquotage n'est pas nécessaire pour le stockage à -20C

**\*\*\* Les 20ul contiennent 0,1% de BSA.**

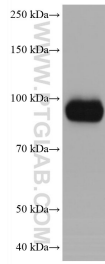
For technical support and original validation data for this product please contact:

T: 1 (888) 4PTGLAB (1-888-478-4522) (toll free  
in USA), or 1(312) 455-8498 (outside USA)

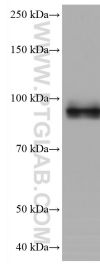
E: [proteintech@ptglab.com](mailto:proteintech@ptglab.com)  
W: [ptglab.com](http://ptglab.com)

**This product is exclusively available under Proteintech Group brand and is not available to purchase from any other manufacturer.**

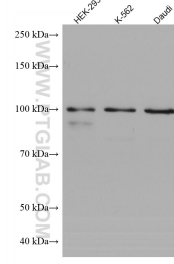
## Données de validation sélectionnées



U2OS cells were subjected to SDS PAGE followed by western blot with 68060-1-Ig (GEN1 antibody) at dilution of 1:2000 incubated at room temperature for 1.5 hours.



A549 cells were subjected to SDS PAGE followed by western blot with 68060-1-Ig (GEN1 antibody) at dilution of 1:2000 incubated at room temperature for 1.5 hours.



Various lysates were subjected to SDS PAGE followed by western blot with 68060-1-Ig (GEN1 antibody) at dilution of 1:2000 incubated at room temperature for 1.5 hours.