

À des fins de recherche uniquement

Anticorps Monoclonal anti-NSF

Numéro de catalogue: 68061-1-Ig **Phare**



Informations de base

Numéro de catalogue: 68061-1-Ig	Numéro d'acquisition GenBank: BC030613	Méthode de purification: Purification par protéine A
Taille: 150ul , Concentration: 1000 µg/ml by Nanodrop;	Identification du gène (NCBI): 4905	CloneNo.: 2B6H6
Hôte: Mouse	Nom complet: N-ethylmaleimide-sensitive factor	Dilutions recommandées: WB 1:5000-1:50000
Isotype: IgG2a	MW calculé: 744 aa, 83 kDa	
Immunogen Catalog Number: AG15422	MW observés: 70-83 kDa	

Applications

Applications testées:
WB, ELISA

Spécificité de l'espèce:
Humain, Lapin, porc, poulet, rat, souris

Contrôles positifs:

WB : tissu cérébral de porc, cellules HEK-293, cellules PC-12, cellules SH-SY5Y, tissu cérébral de lapin, tissu cérébral de poulet, tissu cérébral de rat, tissu cérébral de souris

Informations générales

Stockage

Stockage:
Stocker à -20°C. Stable pendant un an après l'expédition.
Tampon de stockage:
PBS avec azoture de sodium à 0,02 % et glycérol à 50 % pH 7,3
L'aliquotage n'est pas nécessaire pour le stockage à -20C

***** Les 20ul contiennent 0,1% de BSA.**

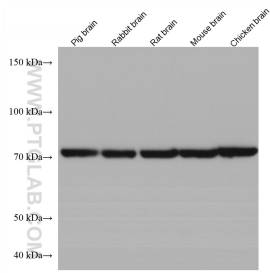
For technical support and original validation data for this product please contact:

T: 1 (888) 4PTGLAB (1-888-478-4522) (toll free
in USA), or 1(312) 455-8498 (outside USA)

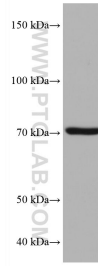
E: proteintech@ptglab.com
W: ptglab.com

This product is exclusively available under Proteintech Group brand and is not available to purchase from any other manufacturer.

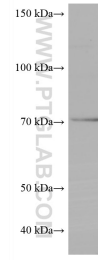
Données de validation sélectionnées



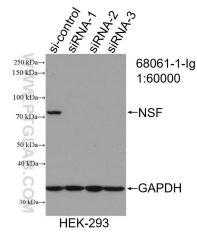
Various lysates were subjected to SDS PAGE followed by western blot with 68061-1-Ig (NSF antibody) at dilution of 1:10000 incubated at room temperature for 1.5 hours.



PC-12 cells were subjected to SDS PAGE followed by western blot with 68061-1-Ig (NSF antibody) at dilution of 1:10000 incubated at room temperature for 1.5 hours.



SH-SY5Y cells were subjected to SDS PAGE followed by western blot with 68061-1-Ig (NSF antibody) at dilution of 1:10000 incubated at room temperature for 1.5 hours.



WB result of NSF antibody (68061-1-Ig; 1:60000; incubated at room temperature for 1.5 hours) with sh-Control and sh-NSF transfected HEK-293 cells.