

À des fins de recherche uniquement

# Anticorps Monoclonal anti-EEA1

Numéro de catalogue: 68065-1-Ig **4 Publications**



## Informations de base

Numéro de catalogue: 68065-1-Ig	Numéro d'acquisition GenBank: NM_003566	Méthode de purification: Purification par protéine G
Taille: 150ul , Concentration: 1000 µg/ml by Nanodrop;	Identification du gène (NCBI): 8411	CloneNo.: 1E11E4
Hôte: Mouse	Nom complet: early endosome antigen 1	Dilutions recommandées: WB 1:5000-1:50000 IF 1:1500-1:6000
Isotype: IgG1	MW calculé 162 kDa	
Immunogen Catalog Number: AG28814	MW observés: 162 kDa	

## Applications

### Applications testées:

IF, WB, ELISA

### Demandes citées:

IF

### Spécificité de l'espèce:

Humain, rat, souris

### Espèces citées:

Humain, souris

### Contrôles positifs:

WB : cellules A431, cellules HEK-293, cellules HeLa, cellules HepG2, cellules HSC-T6, cellules Jurkat, cellules K-562, cellules LNCaP, cellules NIH/3T3

IF : cellules HepG2,

## Informations générales

Early endosome antigen 1 (EEA1) is a marker of early endosomes and has an important role in endosomal trafficking. EEA1 contains coiled-coil regions and an FYVE-type zinc finger which interacts with phosphatidylinositol-3-phosphate. EEA1 functions as a Rab5 effector, mediates endosome docking and, together with SNAREs, leads to membrane fusion.

## Publications notables

Autrice	Pubmed ID	Journal	Application
Honghong Zhan	36552516	Antioxidants (Basel)	IF
Jian Bao	34864680	J Alzheimers Dis	IF
Melanie Engler	37402592	Life Sci Alliance	IF

## Stockage

### Stockage:

Stocker à -20 °C

### Tampon de stockage:

PBS avec azoture de sodium à 0,02 % et glycérol à 50 % pH 7,3

L'aliquotage n'est pas nécessaire pour le stockage à -20C

\*\*\* Les 20ul contiennent 0,1% de BSA.

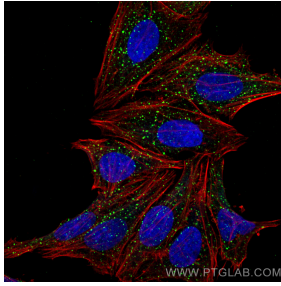
For technical support and original validation data for this product please contact:

T: 1 (888) 4PTGLAB (1-888-478-4522) (toll free  
in USA), or 1(312) 455-8498 (outside USA)

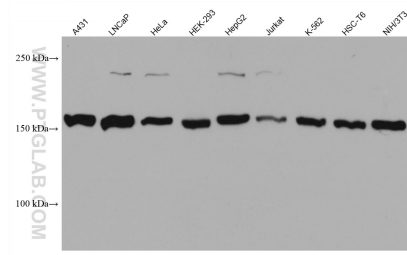
E: proteintech@ptglab.com  
W: ptglab.com

This product is exclusively available under Proteintech Group brand and is not available to purchase from any other manufacturer.

## Données de validation sélectionnées



Immunofluorescent analysis of (4% PFA) fixed HepG2 cells using EEA1 antibody (68065-1-Ig, Clone: 1E11E4) at dilution of 1:3000 and CoraLite@488-Conjugated AffiniPure Goat Anti-Mouse IgG(H+L), CL594-Phalloidin (red).



Various lysates were subjected to SDS PAGE followed by western blot with 68065-1-Ig (EEA1 antibody) at dilution of 1:10000 incubated at room temperature for 1.5 hours.