

À des fins de recherche uniquement

Anticorps Monoclonal anti-ARF1

Numéro de catalogue: 68069-1-Ig



Informations de base

Numéro de catalogue: 68069-1-Ig	Numéro d'acquisition GenBank: BC009247	Méthode de purification: Purification par protéine G
Taille: 150ul, Concentration: 1000 µg/ml by Nanodrop;	Identification du gène (NCBI): 375	CloneNo.: 1C10E3
Hôte: Mouse	Nom complet: ADP-ribosylation factor 1	Dilutions recommandées: WB 1:5000-1:50000 IF 1:400-1:1600
Isotype: IgG1	MW calculé 21 kDa	
Immunogen Catalog Number: AG28021	MW observés: 18-21 kDa	

Applications

Applications testées:

IF, WB, ELISA

Spécificité de l'espèce:

Humain, Lapin, rat, souris

Contrôles positifs:

WB : cellules A431, cellules HEK-293, cellules HeLa, cellules HepG2, cellules LNCaP, tissu cérébral de lapin, tissu cérébral de rat, tissu cérébral de souris

IF : cellules HeLa,

Informations générales

ADP-ribosylation factors (ARFs) are members of the ARF family of GTP-binding proteins of the Ras superfamily. ARFs bind and regulate GTP/GDP cycle by alternating between the active GTP-bound and inactive GDP-bound conformations. ARF family proteins are essential and ubiquitous in eukaryotes. Six highly conserved members of the family have been identified in mammalian cells. They function in vesicular traffic and actin remodelling and other bioprocesses in cells. The ARF1 protein is localized to the Golgi apparatus and has a central role in intra-Golgi transport. It mainly functions in coat recruitment.(PMID: 7759471, PMID: 16042562).

Stockage

Stockage:

Stocker à -20°C. Stable pendant un an après l'expédition.

Tampon de stockage:

PBS avec azoture de sodium à 0,02 % et glycérol à 50 % pH 7,3

L'aliquotage n'est pas nécessaire pour le stockage à -20C

*** Les 20ul contiennent 0,1% de BSA.

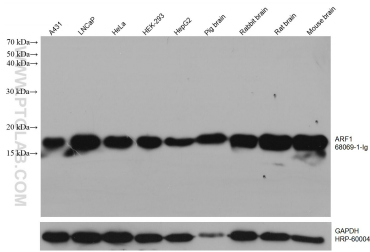
For technical support and original validation data for this product please contact:

T: 1 (888) 4PTGLAB (1-888-478-4522) (toll free
in USA), or 1(312) 455-8498 (outside USA)

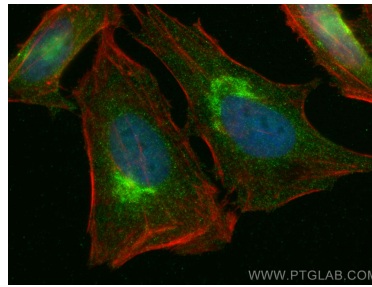
E: proteintech@ptglab.com
W: ptglab.com

This product is exclusively available under Proteintech Group brand and is not available to purchase from any other manufacturer.

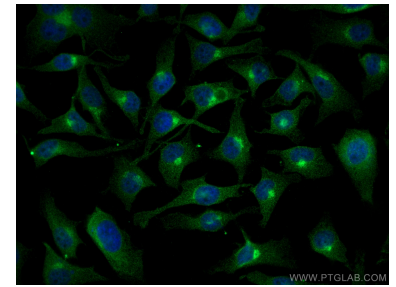
Données de validation sélectionnées



Various lysates were subjected to SDS PAGE followed by western blot with 68069-1-Ig (ARF1 antibody) at dilution of 1:10000 incubated at room temperature for 1.5 hours. The membrane was stripped and reblotted with HRP-conjugated GAPDH Monoclonal antibody (HRP-60004) as loading control.



Immunofluorescent analysis of (4% PFA) fixed HeLa cells using ARF1 antibody (68069-1-Ig, Clone: 1C10E3) at dilution of 1:800 and CoraLite@488-Conjugated AffiniPure Goat Anti-Mouse IgG(H+L), CL594-phalloidin (red).



Immunofluorescent analysis of (4% PFA) fixed HeLa cells using ARF1 antibody (68069-1-Ig, Clone: 1C10E3) at dilution of 1:400 and CoraLite@488-Conjugated AffiniPure Goat Anti-Mouse IgG(H+L).