

À des fins de recherche uniquement

# Anticorps Monoclonal anti-PTPRF

Numéro de catalogue: 68070-1-Ig



## Informations de base

<b>Numéro de catalogue:</b> 68070-1-Ig	<b>Numéro d'acquisition GenBank:</b> BC048768	<b>Méthode de purification:</b> Purification par protéine G
<b>Taille:</b> 150ul , Concentration: 1000 µg/ml by Nanodrop;	<b>Identification du gène (NCBI):</b> 5792	<b>CloneNo.:</b> 2D12G7
<b>Hôte:</b> Mouse	<b>Nom complet:</b> protein tyrosine phosphatase, receptor type, F	<b>Dilutions recommandées:</b> WB 1:1000-1:6000
<b>Isotype:</b> IgG1	<b>MW calculé</b> 1898 aa, 212 kDa	
<b>Immunogen Catalog Number:</b> AG25441	<b>MW observés:</b> 150 kDa, 213 kDa	

## Applications

**Applications testées:**  
WB, ELISA

**Spécificité de l'espèce:**  
Humain

**Contrôles positifs:**

**WB :** cellules HeLa, cellules 4T1, cellules A549, cellules HEK293, cellules HSC-T6, cellules Jurkat, cellules LNCaP, cellules MCF-7, cellules U2OS

## Informations générales

### Stockage

**Stockage:**  
Stocker à -20°C. Stable pendant un an après l'expédition.

**Tampon de stockage:**  
PBS avec azoture de sodium à 0,02 % et glycérol à 50 % pH 7,3

L'aliquotage n'est pas nécessaire pour le stockage à -20C

**\*\*\* Les 20ul contiennent 0,1% de BSA.**

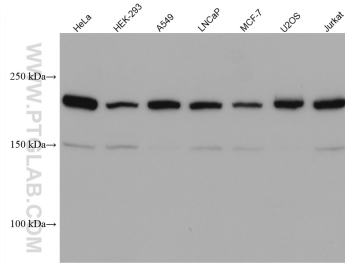
For technical support and original validation data for this product please contact:

T: 1 (888) 4PTGLAB (1-888-478-4522) (toll free in USA), or 1(312) 455-8498 (outside USA)

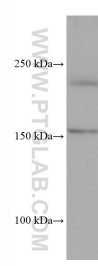
E: [proteintech@ptglab.com](mailto:proteintech@ptglab.com)  
W: [ptglab.com](http://ptglab.com)

**This product is exclusively available under Proteintech Group brand and is not available to purchase from any other manufacturer.**

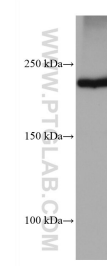
## Données de validation sélectionnées



Various lysates were subjected to SDS PAGE followed by western blot with 68070-1-Ig (PTPRF antibody) at dilution of 1:3000 incubated at room temperature for 1.5 hours.



HSC-T6 cells were subjected to SDS PAGE followed by western blot with 68070-1-Ig (PTPRF antibody) at dilution of 1:3000 incubated at room temperature for 1.5 hours.



4T1 cells were subjected to SDS PAGE followed by western blot with 68070-1-Ig (PTPRF antibody) at dilution of 1:3000 incubated at room temperature for 1.5 hours.