

À des fins de recherche uniquement

Anticorps Monoclonal anti-mCherry

Numéro de catalogue: 68088-1-Ig



Informations de base

| | | |
|--|---|---|
| Numéro de catalogue: 68088-1-Ig | Numéro d'acquisition GenBank: Identification du gène (NCBI): | Méthode de purification: Purification par protéine G |
| Taille: 150ul , Concentration: 1000 µg/ml by Nanodrop; | Nom complet: MW calculé 27 kDa | CloneNo.: 1B3C6 |
| Hôte: Mouse | | Dilutions recommandées: WB 1:2000-1:10000 |
| Isotype: IgG1 | | |
| Immunogen Catalog Number: AG25320 | | |

Applications

| | |
|---|---|
| Applications testées: WB, ELISA | Contrôles positifs: WB : cellules HEK-293, |
| Spécificité de l'espèce: Protéine recombinante | |

Informations générales

mCherry is a fluorophore (a fluorescent protein) used in biotechnology as a tracer to follow the flow of fluids, as a marker when tagged to molecules and cell components. mCherry is the second generation monomeric red fluorescent protein that have improved brightness and photostability. mCherry and the majority of red fluorescent proteins derive from a protein isolated from *Discosoma* sp. mCherry is a monomeric fluorescent construct with peak absorption/emission at 587 nm and 610 nm, respectively.

Stockage

Stockage:
Stocker à -20 °C.
Tampon de stockage:
PBS avec azoture de sodium à 0,02 % et glycérol à 50 % pH 7,3
L'aliquotage n'est pas nécessaire pour le stockage à -20C

***** Les 20ul contiennent 0,1% de BSA.**

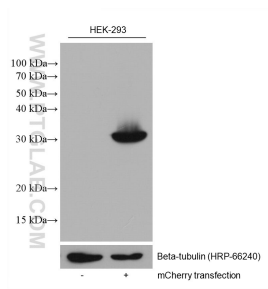
For technical support and original validation data for this product please contact:

T: 1 (888) 4PTGLAB (1-888-478-4522) (toll free
in USA), or 1(312) 455-8498 (outside USA)

E: proteintech@ptglab.com
W: ptglab.com

This product is exclusively available under Proteintech Group brand and is not available to purchase from any other manufacturer.

Données de validation sélectionnées



HEK-293 cells were subjected to SDS PAGE followed by western blot with 68088-1-Ig (mCherry antibody) at dilution of 1:5000 incubated at room temperature for 1.5 hours.