

À des fins de recherche uniquement

Anticorps Monoclonal anti-MIST1

Numéro de catalogue: 68092-1-Ig



Informations de base

Numéro de catalogue: 68092-1-Ig	Numéro d'acquisition GenBank: BC113394	Méthode de purification: Purification par protéine A
Taille: 150ul , Concentration: 1000 µg/ml by Nanodrop;	Identification du gène (NCBI): 168620	CloneNo.: 1E10B3
Hôte: Mouse	Nom complet: basic helix-loop-helix family, member a15	Dilutions recommandées: WB 1:2000-1:10000
Isotype: IgG2a	MW calculé 189 aa, 21 kDa	
Immunogen Catalog Number: AG18509	MW observés: 27 kDa	

Applications

Applications testées: WB, ELISA	Contrôles positifs:
Spécificité de l'espèce: Humain, porc, rat, souris	WB : cellules BxPC-3, cellules SW-1990, tissu pancréatique de porc, tissu pancréatique de rat

Informations générales

Muscle intestine stomach expression 1 (MIST1), also named bHLHa15, is a secretory cell transcription factor that belongs to the basic helix-loop-helix superfamily. MIST1 is mainly expressed in serous secreted cells and essential for the development and maturation of secretory cells. Secretory cells lacking MIST1 exhibit structural and functional defects, including alterations in cytoskeletal organization and cell polarity and improper cell-cell junction. In healthy pancreata, MIST1 facilitates cell-to-cell communication, promotes acinar cell polarity, controls Ca²⁺ flux, promotes unfolded protein response (UPR) homeostasis, aids in vesicle assembly, and is required for regulated exocytosis. MIST1 was downregulated in pancreatic cancer tissues compared with normal or adjacent pancreatic tissues and lower MIST1 expression in pancreatic cancer cell lines than normal acinar cells (BxPC-3, PANC-1, SW 1990) (PMID:29859299). MIST1 is downregulated in the development of gastric cancer and in gastric cancer cells compared with SW620 cells (PMID:34149921).

Stockage

Stockage:
Stocker à -20°C. Stable pendant un an après l'expédition.
Tampon de stockage:
PBS avec azoture de sodium à 0,02 % et glycérol à 50 % pH 7,3
L'aliquotage n'est pas nécessaire pour le stockage à -20C

*** Les 20ul contiennent 0,1% de BSA.

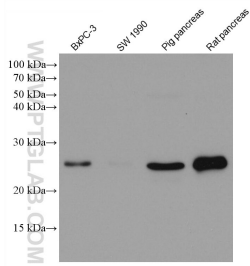
For technical support and original validation data for this product please contact:

T: 1 (888) 4PTGLAB (1-888-478-4522) (toll free
in USA), or 1(312) 455-8498 (outside USA)

E: proteintech@ptglab.com
W: ptglab.com

This product is exclusively available under Proteintech Group brand and is not available to purchase from any other manufacturer.

Données de validation sélectionnées



Various lysates were subjected to SDS PAGE followed by western blot with 68092-1-Ig (MIST1 antibody) at dilution of 1:5000 incubated at room temperature for 1.5 hours.