

À des fins de recherche uniquement

Anticorps Monoclonal anti-Bcl2

Numéro de catalogue: 68103-1-Ig

Phare

30 Publications



Informations de base

Numéro de catalogue: 68103-1-Ig	Numéro d'acquisition GenBank: NM-009741	Méthode de purification: Purification par protéine A
Taille: 150ul, Concentration: 1000 µg/ml by Nanodrop;	Identification du gène (NCBI): 12043	CloneNo.: 1B3F7
Hôte: Mouse	Nom complet: B-cell leukemia/lymphoma 2	Dilutions recommandées: WB 1:2000-1:10000 IF 1:400-1:1600
Isotype: IgG1	MW calculé: 26 kDa	
Immunogen Catalog Number: AG24261	MW observés: 26 kDa	

Applications

Applications testées:

IF, WB, ELISA

Demandes citées:

IHC, WB

Spécificité de l'espèce:

Humain, rat, souris

Espèces citées:

Humain, rat, souris

Contrôles positifs:

WB : cellules HeLa, cellules C2C12, cellules HEK-293, cellules HSC-T6, cellules Jurkat, cellules NIH/3T3, cellules RAW 264.7, tissu cérébral de rat, tissu cérébral de souris, tissu splénique de rat, tissu splénique de souris

IF : cellules NIH/3T3,

Informations générales

Bcl2 is a member of the B cell lymphoma 2 protein family. Members of this family regulate cell death in multiple cell types and can have either proapoptotic or antiapoptotic activities. The protein encoded by this gene inhibits mitochondrial-mediated apoptosis. This protein is an integral outer mitochondrial membrane protein that functions as part of signaling pathway that controls mitochondrial permeability in response to apoptotic stimuli. This protein may also play a role in neuron cell survival and autophagy. Abnormal expression and chromosomal translocations of this gene are associated with cancer progression in numerous tissues.

Publications notables

Autrice	Pubmed ID	Journal	Application
Yujie Zhong	36501024	Nutrients	WB
Gaopeng Guan	36333115	Small	WB
Dalong Wang	36331006	Phytother Res	WB

Stockage

Stockage:

Stocker à -20°C. Stable pendant un an après l'expédition.

Tampon de stockage:

PBS avec azoture de sodium à 0,02 % et glycérol à 50 % pH 7,3

L'aliquotage n'est pas nécessaire pour le stockage à -20C

*** Les 20ul contiennent 0,1% de BSA.

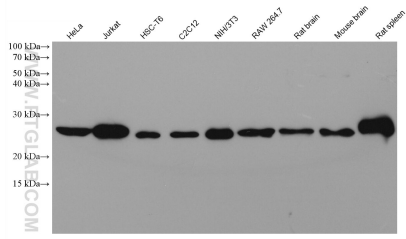
For technical support and original validation data for this product please contact:

T: 1 (888) 4PTGLAB (1-888-478-4522) (toll free in USA), or 1(312) 455-8498 (outside USA)

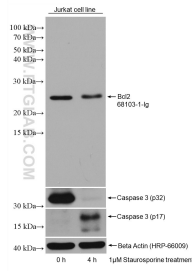
E: proteintech@ptglab.com
W: ptglab.com

This product is exclusively available under Proteintech Group brand and is not available to purchase from any other manufacturer.

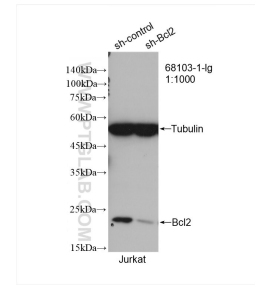
Données de validation sélectionnées



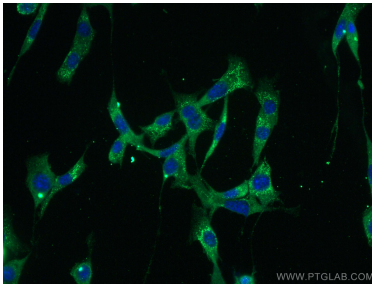
Various lysates were subjected to SDS PAGE followed by western blot with 68103-1-Ig (Bcl2 antibody) at dilution of 1:10000 incubated at room temperature for 1.5 hours.



Jurkat and staurosporine treated Jurkat cells were subjected to SDS PAGE followed by western blot with 68103-1-Ig (Bcl2 antibody) at dilution of 1:10000 incubated at room temperature for 1.5 hours. The membrane was stripped and blotted with Caspase 3 antibody followed by re-blotting with beta actin antibody as loading control.



WB result of Bcl2 antibody (68103-1-Ig: 1:1000; incubated at room temperature for 1.5 hours) with sh-Control and sh-Bcl2 transfected Jurkat cells.



Immunofluorescent analysis of (-20°C Ethanol) fixed NIH/3T3 cells using Bcl2 antibody (68103-1-Ig, Clone: 1B3F7) at dilution of 1:800 and CoraLite@488-Conjugated AffiniPure Goat Anti-Mouse IgG(H+L).