

À des fins de recherche uniquement

Anticorps Monoclonal anti-AXL

Numéro de catalogue: 68108-1-Ig



Informations de base

Numéro de catalogue: 68108-1-Ig	Numéro d'acquisition GenBank: BC032229	Méthode de purification: Purification par protéine G
Taille: 150ul , Concentration: 1000 µg/ml by Nanodrop;	Identification du gène (NCBI): 558	CloneNo.: 3D12F11
Hôte: Mouse	Nom complet: AXL receptor tyrosine kinase	Dilutions recommandées: WB 1:5000-1:50000
Isotype: IgG1	MW calculé 894 aa, 98 kDa	
Immunogen Catalog Number: AG14401	MW observés: 130-140 kDa	

Applications

Applications testées:
FC, WB, ELISA
Spécificité de l'espèce:
Humain

Contrôles positifs:

WB : cellules NCI-H1299, cellules A431, cellules A549,
cellules HeLa, cellules U2OS

Informations générales

Stockage

Stockage:
Stocker à -20°C. Stable pendant un an après l'expédition.
Tampon de stockage:
PBS avec azoture de sodium à 0,02 % et glycérol à 50 % pH 7,3
L'aliquotage n'est pas nécessaire pour le stockage à -20C

***** Les 20ul contiennent 0,1% de BSA.**

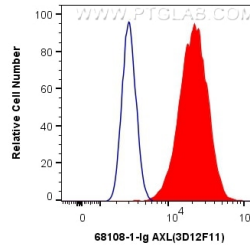
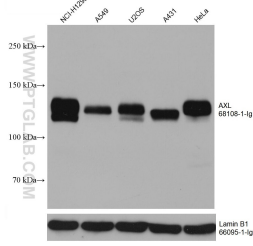
For technical support and original validation data for this product please contact:

T: 1 (888) 4PTGLAB (1-888-478-4522) (toll free
in USA), or 1(312) 455-8498 (outside USA)

E: proteintech@ptglab.com
W: ptglab.com

This product is exclusively available under Proteintech Group brand and is not available to purchase from any other manufacturer.

Données de validation sélectionnées



Various lysates were subjected to SDS PAGE followed by western blot with 68108-1-Ig (AXL antibody) at dilution of 1:20000 incubated at room temperature for 1.5 hours. The membrane was stripped and reblotted with Lamin B1 Monoclonal antibody (66095-1-Ig) as loading control.

1X10⁶ HeLa cells were intracellularly stained with 0.4 ug Anti-Human AXL (68108-1-Ig, Clone:3D12F11) and Coralite®488-Conjugated AffiniPure Goat Anti-Mouse IgG(H+L) at dilution 1:1000 (red), or 0.4 ug Control Antibody. Cells were fixed with 4% PFA and permeabilized with Flow Cytometry Perm Buffer (PF00011-C).