

À des fins de recherche uniquement

# Anticorps Monoclonal anti-CEP89, CCDC123



Numéro de catalogue: 68112-1-Ig

## Informations de base

Numéro de catalogue: 68112-1-Ig	Numéro d'acquisition GenBank: BC136328	Méthode de purification: Purification par protéine G
Taille: 150ul, Concentration: 1000 µg/ml by Nanodrop;	Identification du gène (NCBI): 84902	CloneNo.: 1F12C5
Hôte: Mouse	Nom complet: coiled-coil domain containing 123	Dilutions recommandées: WB 1:1000-1:4000 IF 1:200-1:800
Isotype: IgG1	MW calculé: 783 aa, 90 kDa	
Immunogen Catalog Number: AG28339	MW observés: 90 kDa	

## Applications

Applications testées:  
IF, WB, ELISA  
Spécificité de l'espèce:  
Humain, souris

Contrôles positifs:

WB : cellules HeLa, cellules A431, cellules A549,  
cellules Neuro-2a, cellules SH-SY5Y, cellules U-251  
IF : tissu oculaire de souris,

## Informations générales

CCDC123 (as known as CEP123), also named as CEP89, encodes for a protein required for ciliogenesis. It plays a role in mitochondrial metabolism by modulating complex IV activity. It has been shown that CEP123 is localized to the distal appendages of the mother centriole and the localization of CEP123 is cell cycle-dependent with its levels decreasing during mitosis. CEP123 depletion can cause defects in ciliary vesicle formation and prevent the formation of a ciliary vesicle at the distal end of the mother centriole. It is possible that CEP123 is involved in regulating the recruitment of membranes to the centrosome through its interaction with CEP290 (PMID:23575228, 23789104, 23348840).

## Stockage

Stockage:  
Stocker à -20°C. Stable pendant un an après l'expédition.  
Tampon de stockage:  
PBS avec azoture de sodium à 0,02 % et glycérol à 50 % pH 7,3  
L'aliquotage n'est pas nécessaire pour le stockage à -20C

\*\*\* Les 20ul contiennent 0,1% de BSA.

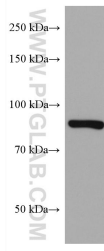
For technical support and original validation data for this product please contact:

T: 1 (888) 4PTGLAB (1-888-478-4522) (toll free  
in USA), or 1(312) 455-8498 (outside USA)

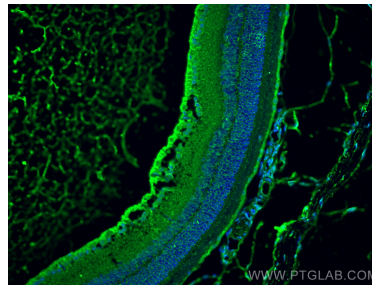
E: [proteintech@ptglab.com](mailto:proteintech@ptglab.com)  
W: [ptglab.com](http://ptglab.com)

This product is exclusively available under Proteintech Group brand and is not available to purchase from any other manufacturer.

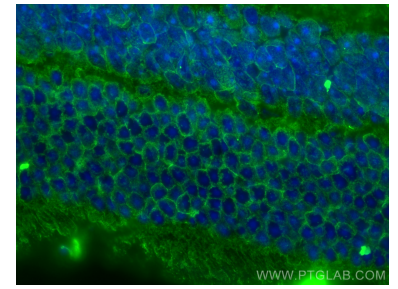
## Données de validation sélectionnées



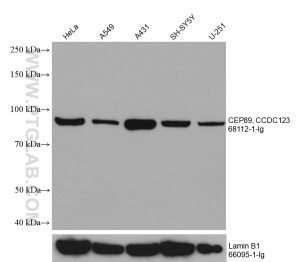
Neuro-2a cells were subjected to SDS PAGE followed by western blot with 68112-1-Ig (CCDC123 antibody) at dilution of 1:2000 incubated at room temperature for 1.5 hours.



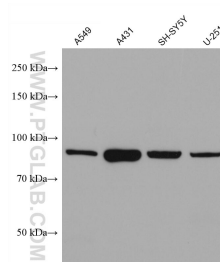
Immunofluorescent analysis of (4% PFA) fixed mouse eye tissue using CEP89, CCDC123 antibody (68112-1-Ig, Clone: 1F12C5) at dilution of 1:400 and CoraLite®488-Conjugated AffiniPure Goat Anti-Mouse IgG(H+L).



Immunofluorescent analysis of (4% PFA) fixed mouse eye tissue using CEP89, CCDC123 antibody (68112-1-Ig, Clone: 1F12C5) at dilution of 1:400 and CoraLite®488-Conjugated AffiniPure Goat Anti-Mouse IgG(H+L).



Various lysates were subjected to SDS PAGE followed by western blot with 68112-1-Ig (CEP89, CCDC123 antibody) at dilution of 1:2000 incubated at room temperature for 1.5 hours. The membrane was stripped and reblotted with Lamin B1 Monoclonal antibody (66095-1-Ig) as loading control.



Various lysates were subjected to SDS PAGE followed by western blot with 68112-1-Ig (CCDC123 antibody) at dilution of 1:2000 incubated at room temperature for 1.5 hours.