

À des fins de recherche uniquement

Anticorps Monoclonal anti-PACSIN1

Numéro de catalogue: 68115-1-Ig



Informations de base

Numéro de catalogue: 68115-1-Ig	Numéro d'acquisition GenBank: BC040228	Méthode de purification: Purification par protéine G
Taille: 150ul, Concentration: 1000 µg/ml by Nanodrop;	Identification du gène (NCBI): 29993	CloneNo.: 1B7B4
Hôte: Mouse	Nom complet: protein kinase C and casein kinase substrate in neurons 1	Dilutions recommandées: WB 1:1000-1:4000 IHC 1:2000-1:8000 IF 1:400-1:1600
Isotype: IgG1	MW calculé 444 aa, 51 kDa	
Immunogen Catalog Number: AG4102	MW observés: 48-51 kDa	

Applications

Applications testées:

FC, IF, IHC, WB, ELISA

Spécificité de l'espèce:

Humain, Lapin, porc, poulet, rat, souris

Remarque-IHC: il est suggéré de démasquer l'antigène avec un tampon de TE buffer pH 9,0; (*) À défaut, 'le démasquage de l'antigène peut être effectué avec un tampon citrate pH 6,0.

Contrôles positifs:

WB : tissu cérébral de porc, tissu cérébral de lapin, tissu cérébral de poulet, tissu cérébral de rat, tissu cérébral de souris

IHC : tissu de cervelet de souris, tissu cérébral de souris

IF : cellules SH-SY5Y,

Informations générales

PACSIN1 (also known as syndapin-1) is a member of the protein kinase C and casein kinase substrate in neurons (PACSIN) family. In mammals, the PACSIN family is comprised of three members, PACSIN1, PACSIN2, and PACSIN3 (PMID: 34990060). PACSIN1 is expressed mainly in neurons, whereas PACSIN2 is ubiquitously expressed in all tissues, and PACSIN3 is expressed mainly in skeletal muscle and the heart (PMID: 23668323). All of these three members contain an N-terminal F-BAR domain and a C-terminal SH3 domain. PACSIN1 plays a role in endocytosis and endosomal recycling. Meanwhile, it has a role in actin remodeling and microtubule nucleation and also plays a particular role in membrane shaping and reconstruction (PMID: 23035120; 34422904). PACSIN1 is involved in neuromorphogenesis and the regulation of the nervous system, and the inappropriate expression of PACSIN1 has been associated with some neurological diseases, including schizophrenia, Alzheimer's disease, and Huntington's disease (PMID: 34990060).

Stockage

Stockage:

Stocker à -20°C. Stable pendant un an après l'expédition.

Tampon de stockage:

PBS avec azoture de sodium à 0,02 % et glycérol à 50 % pH 7,3

L'aliquotage n'est pas nécessaire pour le stockage à -20C

*** Les 20ul contiennent 0,1% de BSA.

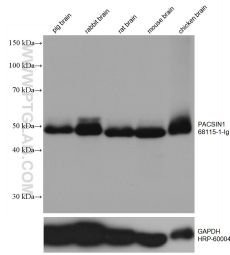
For technical support and original validation data for this product please contact:

T: 1 (888) 4PTGLAB (1-888-478-4522) (toll free in USA), or 1(312) 455-8498 (outside USA)

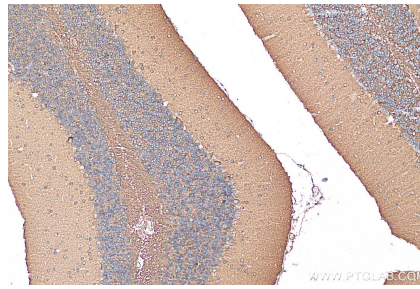
E: proteintech@ptglab.com
W: ptglab.com

This product is exclusively available under Proteintech Group brand and is not available to purchase from any other manufacturer.

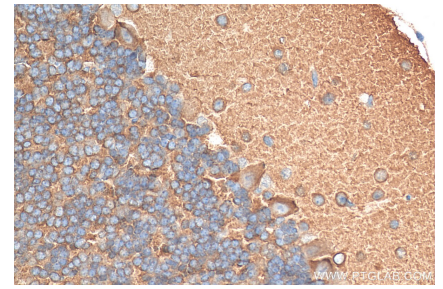
Données de validation sélectionnées



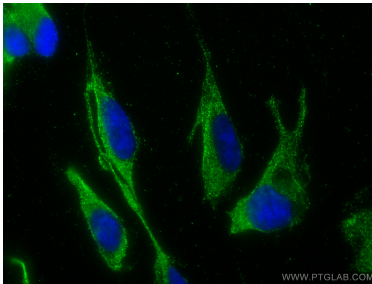
Various lysates were subjected to SDS PAGE followed by western blot with 68115-1-Ig (PACSIN1 antibody) at dilution of 1:2000 incubated at room temperature for 1.5 hours. The membrane was stripped and reblotted with HRP-conjugated GAPDH Monoclonal antibody (HRP-60004) as loading control.



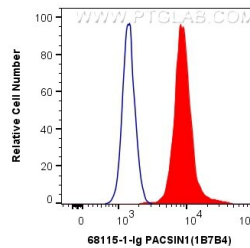
Immunohistochemical analysis of paraffin-embedded mouse cerebellum tissue slide using 68115-1-Ig (PACSIN1 antibody) at dilution of 1:4000 (under 10x lens). Heat mediated antigen retrieval with Tris-EDTA buffer (pH 9.0).



Immunohistochemical analysis of paraffin-embedded mouse cerebellum tissue slide using 68115-1-Ig (PACSIN1 antibody) at dilution of 1:4000 (under 40x lens). Heat mediated antigen retrieval with Tris-EDTA buffer (pH 9.0).



Immunofluorescent analysis of (-20°C Ethanol) fixed SH-SY5Y cells using PACSIN1 antibody (68115-1-Ig, Clone: 1B7B4) at dilution of 1:800 and CoraLite®488-Conjugated AffiniPure Goat Anti-Mouse IgG(H+L).



1X10⁶ SH-SY5Y cells were intracellularly stained with 0.4 ug Anti-Human PACSIN1 (68115-1-Ig, Clone:1B7B4) and CoraLite®488-Conjugated AffiniPure Goat Anti-Mouse IgG(H+L) at dilution 1:1000 (red), or 0.4 ug Mouse IgG1 Isotype Control (MOPC-21) (65124-1-Ig, Clone: MOPC-21) (blue). Cells were fixed with 4% PFA and permeabilized with Flow Cytometry Perm Buffer (PF00011-C).