

À des fins de recherche uniquement

# Anticorps Monoclonal anti-REEP5

Numéro de catalogue: 68119-1-Ig Phare



## Informations de base

Numéro de catalogue: 68119-1-Ig	Numéro d'acquisition GenBank: BC065926	Méthode de purification: Purification par protéine G
Taille: 150ul , Concentration: 1000 µg/ml by Nanodrop;	Identification du gène (NCBI): 7905	CloneNo.: 1H8D8
Hôte: Mouse	Nom complet: receptor accessory protein 5	Dilutions recommandées: WB 1:20000-1:100000 IHC 1:5000-1:20000
Isotype: IgG1	MW calculé: 21 kDa	
Immunogen Catalog Number: AG6229	MW observés: 18 kDa	

## Applications

Applications testées:  
IHC, WB, ELISA

Spécificité de l'espèce:  
Humain, porc

**Remarque-IHC: il est suggéré de démasquer l'antigène avec un tampon de TE buffer pH 9,0; (\*) À défaut, 'le démasquage de l'antigène peut être effectué avec un tampon citrate pH 6,0.**

Contrôles positifs:

WB : cellules HEK-293, cellules HeLa, cellules Jurkat, cellules K-562, cellules LNCaP, cellules MOLT-4, tissu cardiaque de porc

IHC : tissu de cancer du côlon humain,

## Informations générales

REEP5 (receptor expression-enhancing protein 5), also named as C5orf18, DP1 or TB2, is a membrane protein belonging to DP1/Yop1p protein family. All REEP proteins contain a conserved TB2/DP1, HVA22 domain which is involved in intracellular trafficking and secretion (PMID: 19123125). REEP5 is expressed in circumvallate papillae and testis, and may have the function to influence functional cell surface expression of taste receptors (PMID: 16720576). REEP5 can interact with atlastins (ATL1 and ATL2) which are involved in modulating the structure of ER network (PMID: 19665976).

## Stockage

Stockage:  
Stocker à -20°C. Stable pendant un an après l'expédition.  
Tampon de stockage:  
PBS avec azoture de sodium à 0,02 % et glycérol à 50 % pH 7,3  
L'aliquotage n'est pas nécessaire pour le stockage à -20C

\*\*\* Les 20ul contiennent 0,1% de BSA.

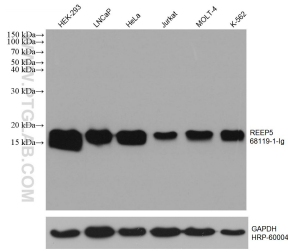
For technical support and original validation data for this product please contact:

T: 1 (888) 4PTGLAB (1-888-478-4522) (toll free in USA), or 1(312) 455-8498 (outside USA)

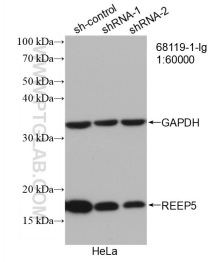
E: proteintech@ptglab.com  
W: ptglab.com

This product is exclusively available under Proteintech Group brand and is not available to purchase from any other manufacturer.

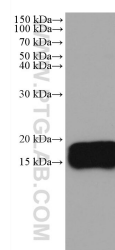
## Données de validation sélectionnées



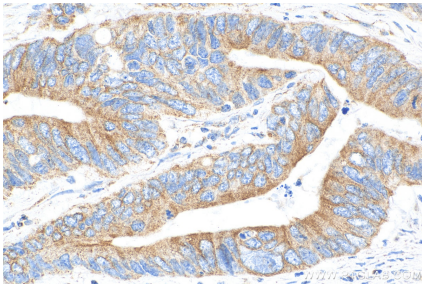
Various lysates were subjected to SDS PAGE followed by western blot with 68119-1-Ig (REEP5 antibody) at dilution of 1:100000 incubated at room temperature for 1.5 hours. The membrane was stripped and reblotted with HRP-conjugated GAPDH Monoclonal antibody (HRP-60004) as loading control.



WB result of REEP5 antibody (68119-1-Ig; 1:60000; incubated at room temperature for 1.5 hours) with sh-Control and sh-REEP5 transfected HeLa cells.



pig heart tissue were subjected to SDS PAGE followed by western blot with 68119-1-Ig (REEP5 antibody) at dilution of 1:100000 incubated at room temperature for 1.5 hours.



Immunohistochemical analysis of paraffin-embedded human colon cancer tissue slide using 68119-1-Ig (REEP5 antibody) at dilution of 1:10000 (under 10x lens). Heat mediated antigen retrieval with Tris-EDTA buffer (pH 9.0).